

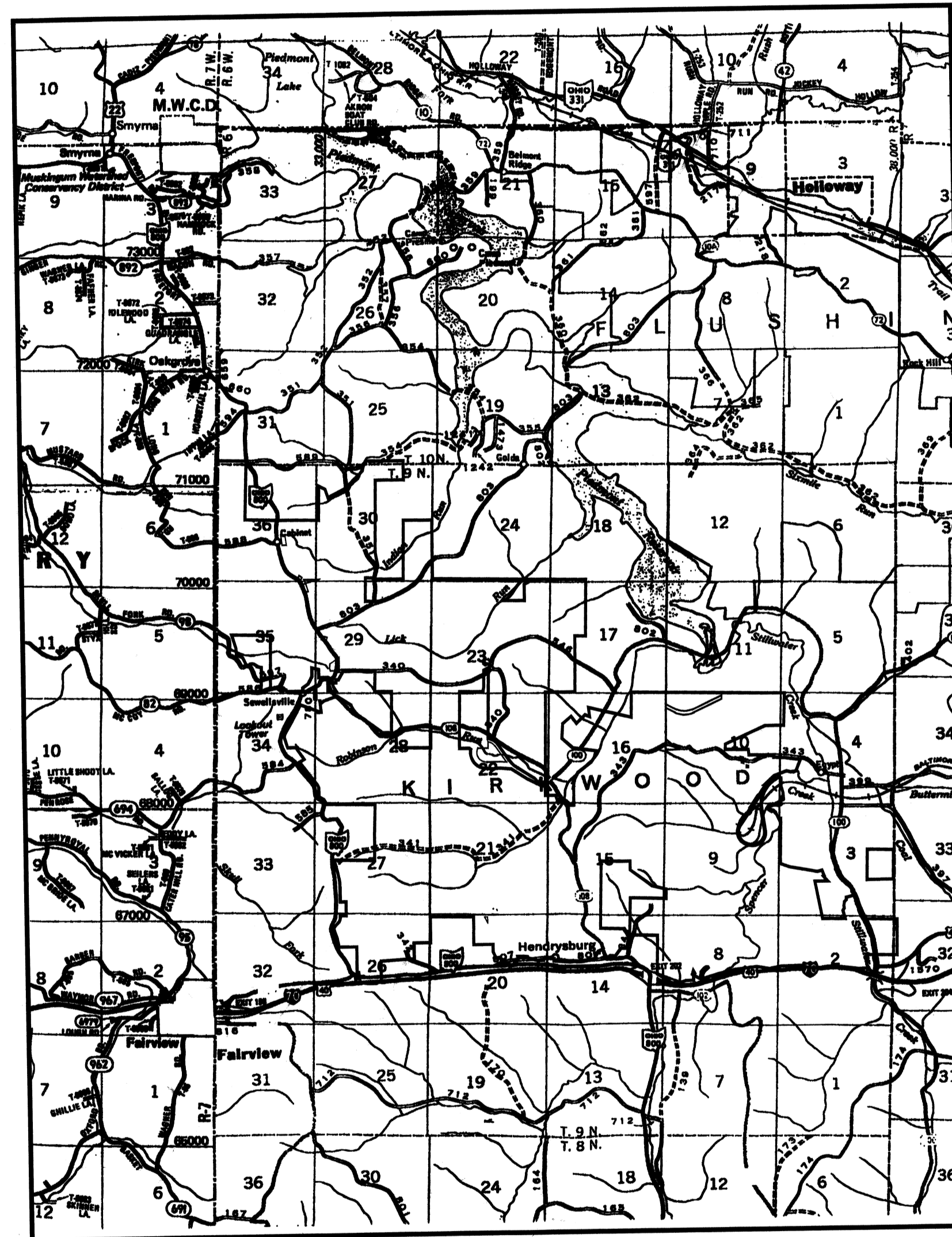
OHIO DEPARTMENT OF NATURAL RESOURCES

DIVISION OF WILDLIFE

EGYPT VALLEY WILDLIFE AREA - SOUTH

SITUATED IN
KIRKWOOD TOWNSHIP, BELMONT COUNTY
LONDONDERRY TOWNSHIP, GUERNSEY COUNTY

INDEX	
SHEET NO.	TITLE
1	COVER SHEET AND INDEX OF DRAWINGS
2	SECTIONS 35 & 36, T-9 R-6, KIRKWOOD TWP., BELMONT COUNTY SECTIONS 4 & 5, T-9 R-7, LONDONDERRY TWP., GUERNSEY COUNTY
3	SECTIONS 29, 30, 35, & 36, T-9 R-6, KIRKWOOD TWP.
4	SECTIONS 17, 18, 23, 24 & 30, T-9 R-6, KIRKWOOD TWP.
5	SECTION 17, T-9 R-6, KIRKWOOD TOWNSHIP
6	SECTIONS 34 & 35, T-9 R-6, KIRKWOOD TWP., BELMONT COUNTY SECTIONS 4 & 5, T-9 R-7, LONDONDERRY TWP., GUERNSEY COUNTY
7	SECTIONS 27, 28, 29, 34 & 35, T-9 R-6, KIRKWOOD TWP.
8	SECTIONS 15, 16, 21, 22 & 23, T-9 R-6, KIRKWOOD TWP.
9	SECTIONS 9, 10, 15, 16 & 17, T-9 R-6, KIRKWOOD TWP.
10	SECTIONS 3, 4, 9 & 10, T-9 R-6, KIRKWOOD TWP.
11	SECTIONS 26 & 27, T-9 R-6, KIRKWOOD TWP.
12	SECTIONS 14, 15, 20 & 21, T-9 R-6, KIRKWOOD TWP.
13	SECTIONS 8, 9 & 14, T-9 R-6, KIRKWOOD TWP.
14	SECTIONS 2, 3 & 9, T-9 R-6, KIRKWOOD TWP.
15	PARCEL ID/ACREAGE SUMMARY



LEGEND

- x — x — FENCE LINE
- - - - - TOWNSHIP LINE
- — — — SECTION LINE
- - - - - TRACT LINE
- IRON PIN (FOUND)
- ⊙ IRON PIPE (FOUND)
- ⊠ MARKED STONE (FOUND)
- UNMARKED STONE (FOUND)
- ⊗ CORNER POST (WOODEN)(FOUND)
- ⊙ IRON BAR (FOUND)
- ⊠ SQUARE BOLT (FOUND)
- ⊠ SQUARE IRON PIN (FOUND)
- ⊕ AXLE (FOUND)
- ⊕ BOLT (FOUND)
- ⊕ RAILROAD TIE (FOUND)
- ⊕ POST (WOODEN)
- CARSONITE POST (SET)
- ALUMINUM MONUMENT (SET), BERNTSEN A2BR30 ALUMINUM BREAK-OFF MONUMENT WITH MAGNETIZED, PINK, HIGH IMPACT, POLYSTYRENE BASE (SEE DETAIL)
- ⬠ REFERENCE/WITNESS MONUMENT (SET) (3/4" REBAR WITH 3-1/4" ALUMINUM CAP)
- ▲ TRACK SPIKE (SET)
- ⊕ CONCRETE MONUMENT (FOUND) (6" DIA. WITH 1" CAP)

DETAIL
NOT TO SCALE

A2BR30 BREAK-OFF MONUMENT

SOURCES OF DATA

1. ALL DEED RECORDS SHOWN HEREIN AND SELECTED PRIORS.
2. B. & O. RAILROAD MAPS.
3. ORIGINAL GOVERNMENT FIELD NOTES FOR SURVEYS IN THE SEVEN RANGES CONDUCTED DURING THE PERIOD 1786 THROUGH 1805.
4. CONSOLIDATION COAL COMPANY PARCEL IDENTIFICATION MAPS.
5. ADJOINING SURVEYS PERFORMED BY: OHIO DEPARTMENT OF TRANSPORTATION
FRANK H. FRAZIER P.S. #515
RUSS HENDERSON
CHARLES W. HUNNELL P.S. #6889
JOSEPH G. JIMISON P.S. #4454
ROBERT K. STERLING P.S. #6513

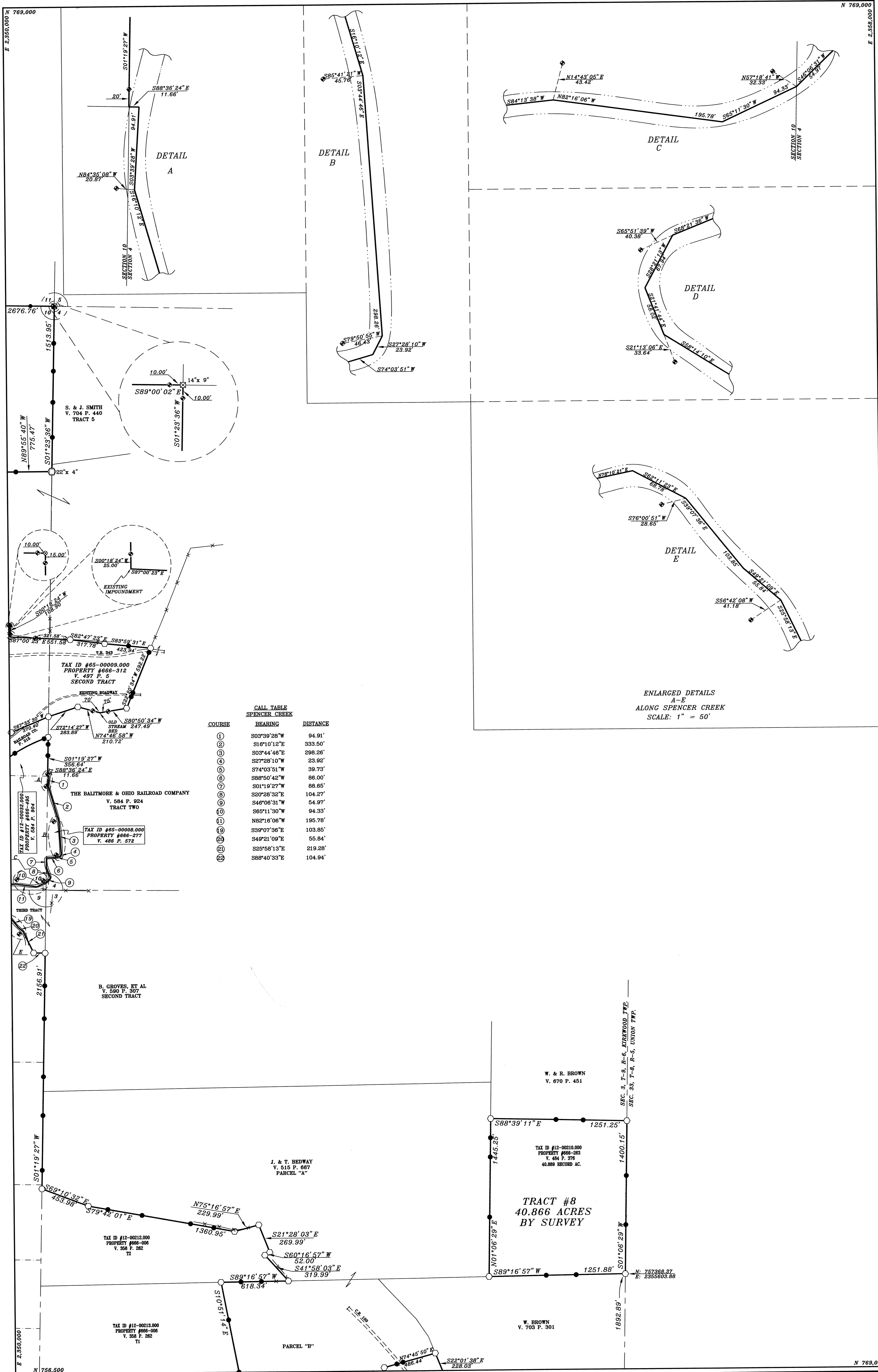
CATHY M. BIHLMAN, P.S. #7199 DATE

CHARLES W. JOHNSON, P.S. #7342 DATE

ROBERT L. GRIFFIN, P.S. #7204 DATE

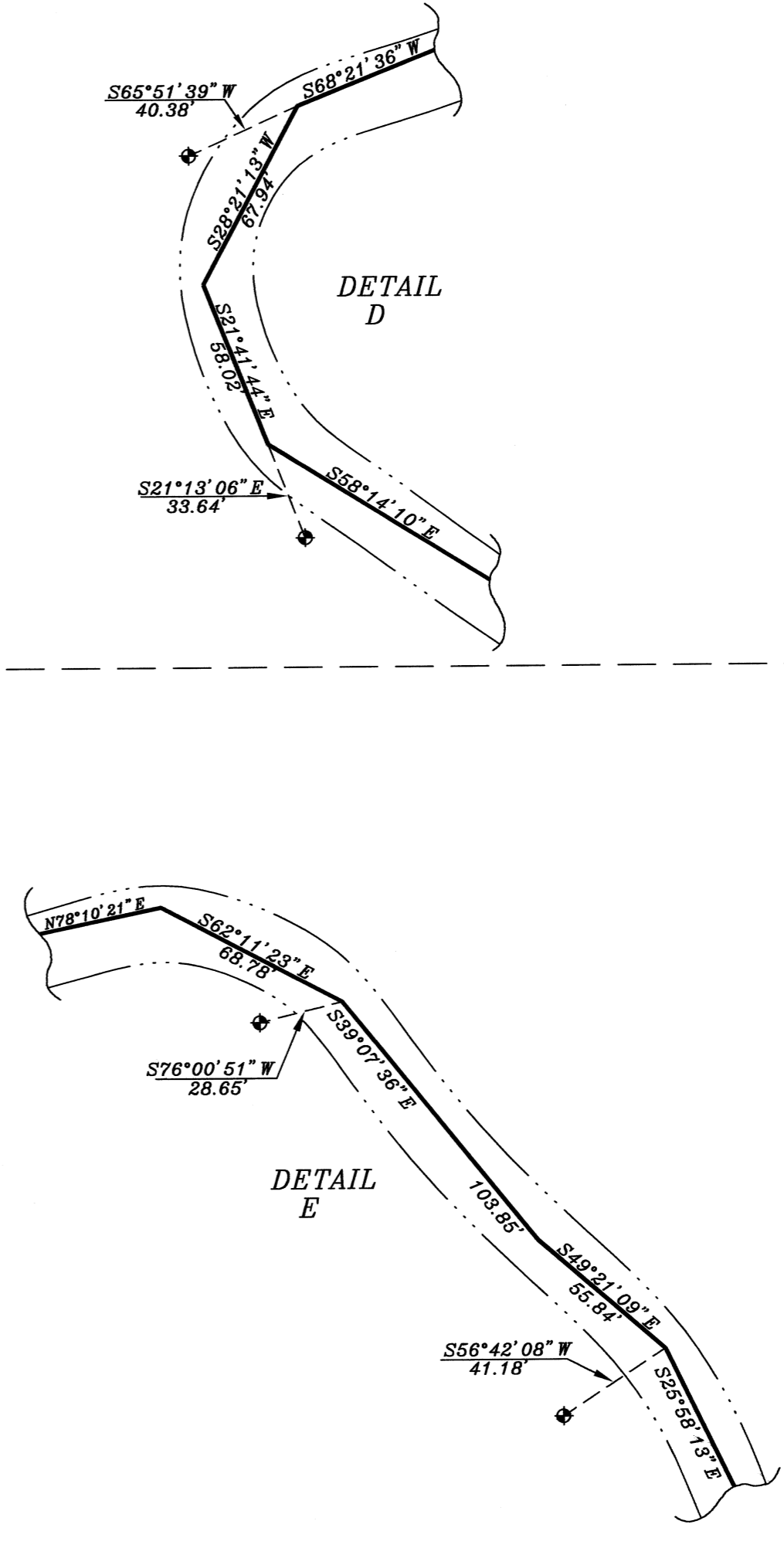
TERRY L. STEFFL, P.S. #6846 DATE

JACK A. HAMILTON, P.S. #6524 DATE



CALL TABLE
SPENCER CREEK

COURSE	BEARING	DISTANCE
①	S03°39'28\"W	94.91'
②	S16°10'12\"E	333.50'
③	S03°44'46\"E	298.26'
④	S27°28'10\"W	23.92'
⑤	S74°03'51\"W	39.73'
⑥	S88°50'42\"W	86.00'
⑦	S01°19'27\"W	88.65'
⑧	S20°28'32\"E	104.27'
⑨	S46°08'31\"W	54.97'
⑩	S65°11'30\"W	94.33'
⑪	N82°16'06\"W	195.78'
⑫	S39°07'36\"E	103.85'
⑬	S49°21'09\"E	55.84'
⑭	S25°58'13\"E	219.28'
⑮	S88°40'33\"E	104.94'

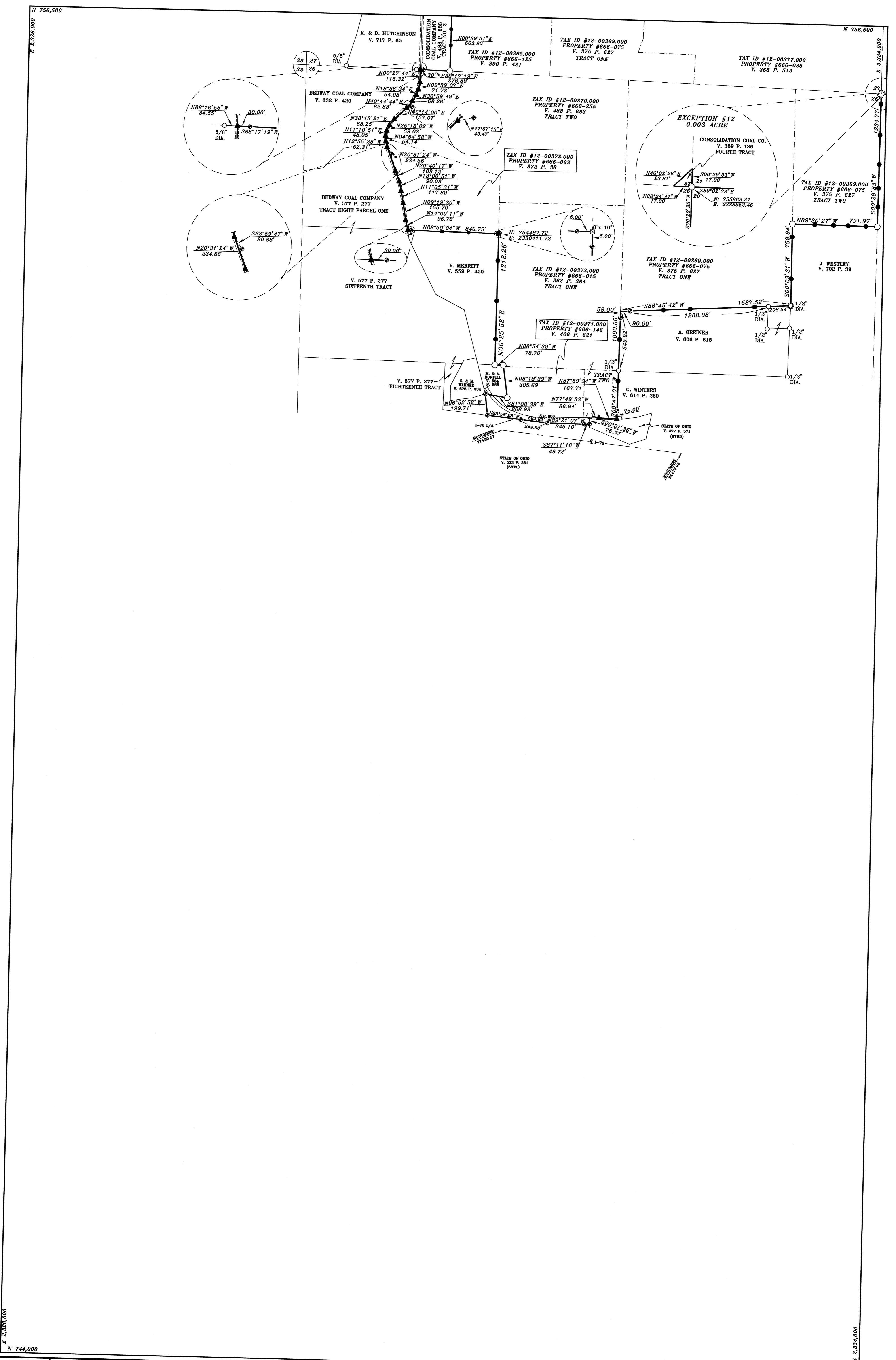


S-10
SHEET 10 OF 16
REVISED DATE:
DRAWN BY: L.J.B.

PREPARED BY:
JACK A. HAMILTON & ASSOCIATES, INC.
P.O. BOX 471, 342 HIGH STREET
FLUSHING, OHIO 43977
PHONE NUMBER (614)968-4947

EGYPT VALLEY WILDLIFE AREA - SOUTH
SITUATED IN:
SECTIONS 3, 4, 9 & 10, T-9 R-6, KIRKWOOD TOWNSHIP,
BELMONT COUNTY, OHIO

SCALE: 1" = 400'
BASIS OF BEARINGS—GRID MERIDIAN OF THE OHIO COORDINATE SYSTEM, SOUTH ZONE, DETERMINED BY CELESTIAL & GPS OBSERVATIONS. COORDINATE SYSTEM—NAD83—OHIO SPC SOUTH ZONE. DISTANCES SHOWN HEREON ARE GRID DISTANCES BASED ON AN OVERALL COMBINED FACTOR OF 0.99996602.

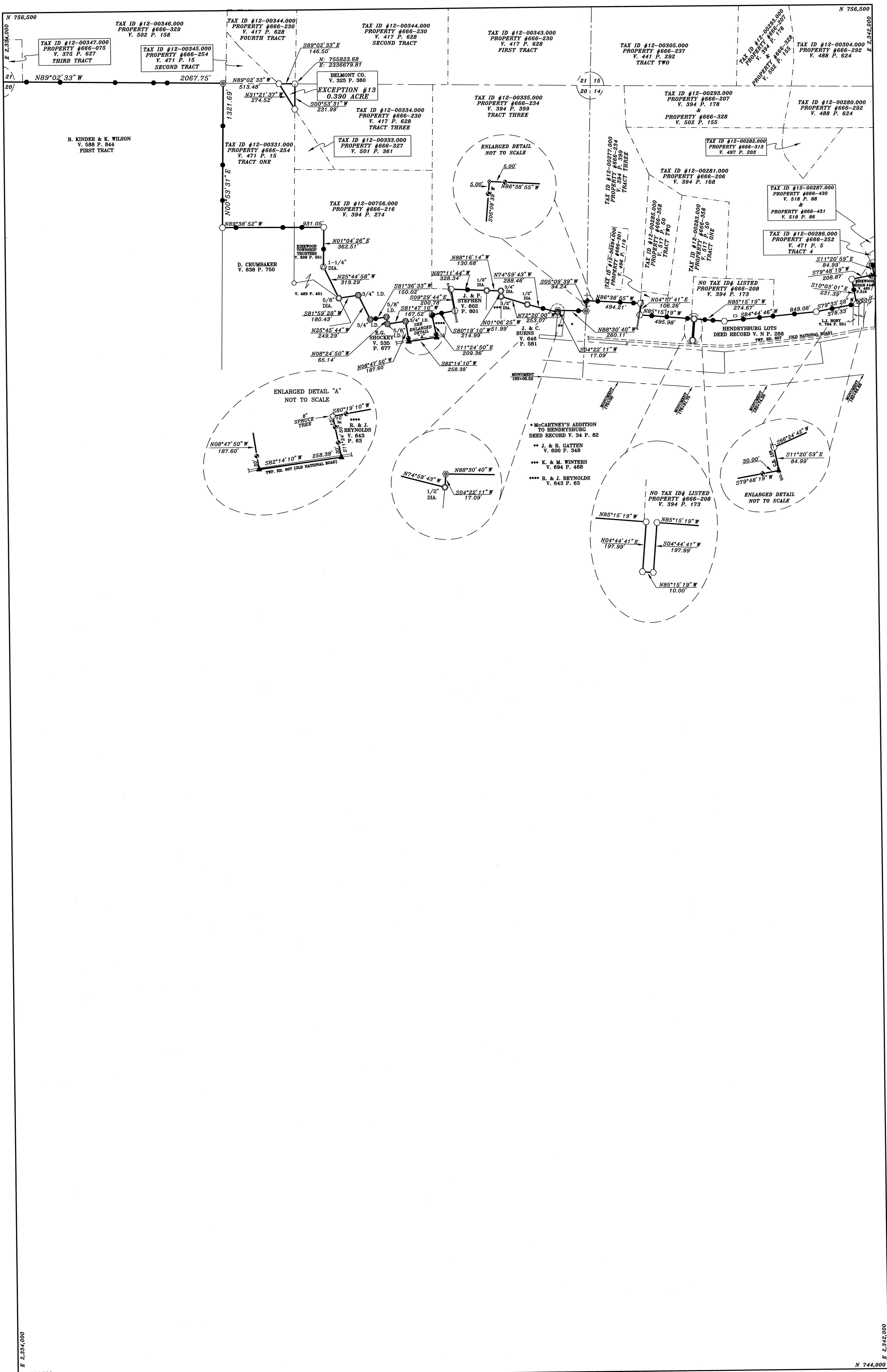


S-11
 SHEET 11 OF 15
 1 2 3 4 5
 6 7 8 9 10
 11 12 13 14

REVISED DATE: _____
 PREPARED BY:
JACK A. HAMILTON & ASSOCIATES, INC.
 P.O. BOX 471, 342 HIGH STREET
 FLUSHING, OHIO 43977
 PHONE NUMBER (614)968-4947
 DRAWN BY: L.J.B.

EGYPT VALLEY WILDLIFE AREA - SOUTH
 SITUATED IN:
 SECTIONS 26 & 27, T-9 R-6, KIRKWOOD TOWNSHIP,
 BELMONT COUNTY, OHIO

SCALE: 1" = 400'
 0' 400' 800' 1200'
 BASIS OF BEARINGS—GRID MERIDIAN OF THE OHIO COORDINATE SYSTEM, SOUTH ZONE, DETERMINED BY CELESTIAL & GPS OBSERVATIONS. COORDINATE SYSTEM—NAD83—OHIO SPC SOUTH ZONE. DISTANCES SHOWN HEREON ARE GRID DISTANCES BASED ON AN OVERALL COMBINED FACTOR OF 0.99996602.



N 756,500
E 2,384,000

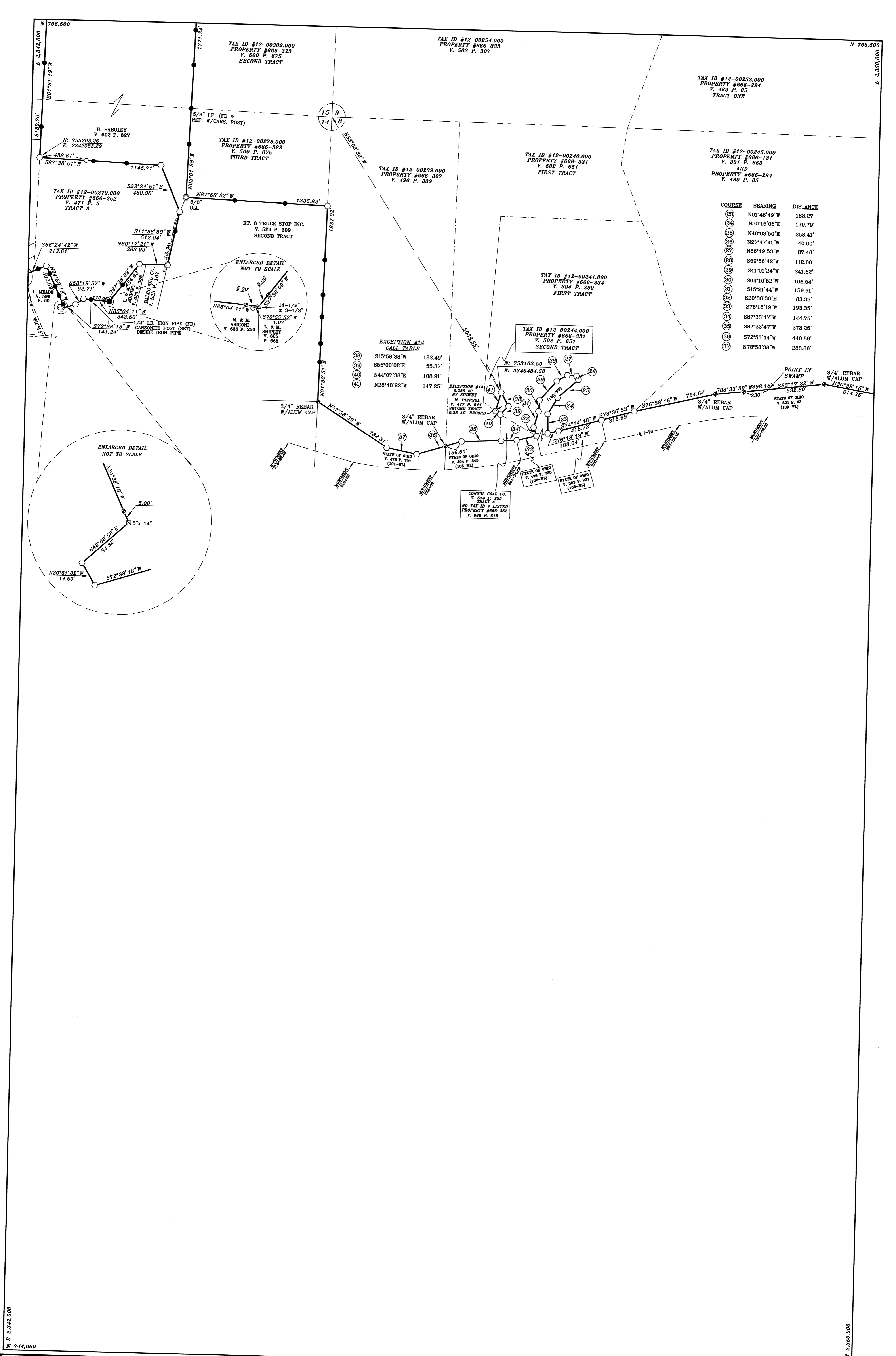
N 744,000
E 2,842,000

SHEET 12 OF 15
1 2 3 4 5
6 7 8 9 10
11 12 13 14
S-12

REVISED DATE: _____
 PREPARED BY:
JACK A. HAMILTON & ASSOCIATES, INC.
 P.O. BOX 471, 342 HIGH STREET
 FLUSHING, OHIO 43977
 PHONE NUMBER (614)968-4947

EGYPT VALLEY WILDLIFE AREA - SOUTH
 SITUATED IN:
 SECTIONS 14, 15, 20 & 21, T-9 R-6, KIRKWOOD TOWNSHIP,
 BELMONT COUNTY, OHIO

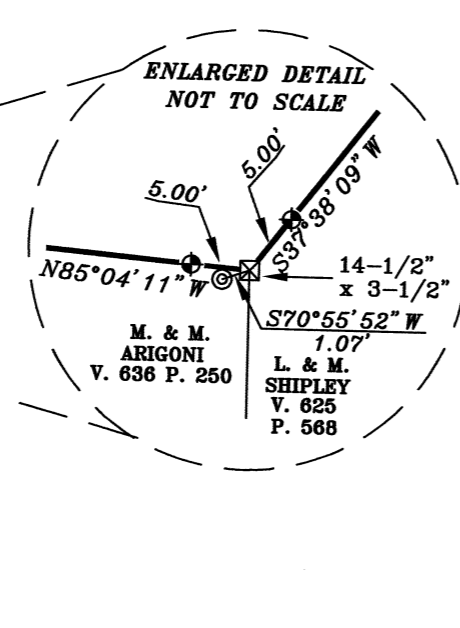
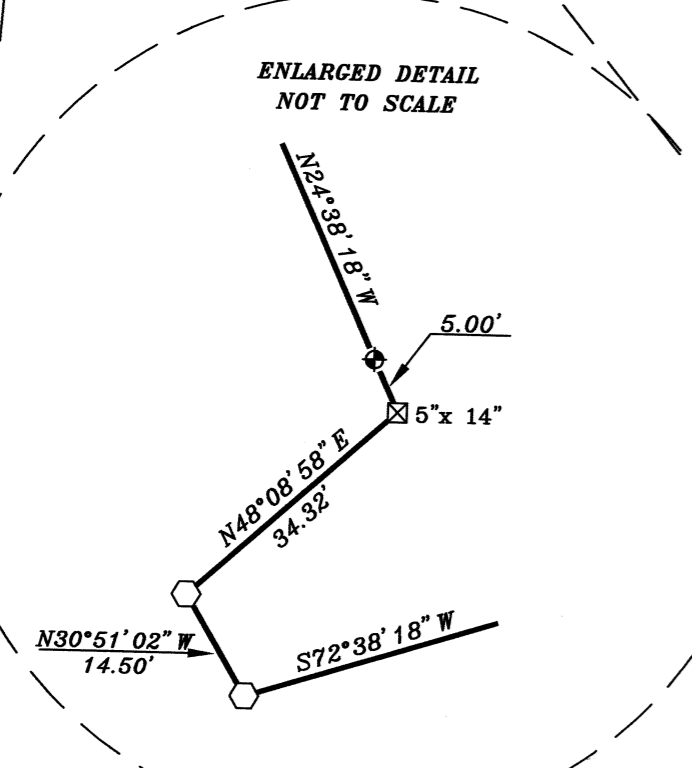
SCALE: 1" = 400'
 0 400' 800' 1200'
 BASIS OF BEARINGS-GRID MERIDIAN OF THE OHIO COORDINATE SYSTEM, SOUTH ZONE, DETERMINED BY CELESTIAL & GPS OBSERVATIONS. COORDINATE SYSTEM-NAD83-OHIO SPC SOUTH ZONE. DISTANCES SHOWN HEREON ARE GRID DISTANCES BASED ON AN OVERALL COMBINED FACTOR OF 0.99996602.



COURSE	BEARING	DISTANCE
(23)	N01°46'49"W	183.27'
(24)	N30°16'06"E	179.79'
(25)	N48°03'50"E	258.41'
(26)	N27°47'41"W	40.00'
(27)	N86°49'53"W	87.46'
(28)	S59°58'42"W	112.80'
(29)	S41°01'24"W	241.62'
(30)	S04°10'52"W	106.54'
(31)	S15°21'44"W	159.91'
(32)	S20°36'30"E	83.33'
(33)	S78°18'19"W	193.35'
(34)	S87°33'47"W	144.76'
(35)	S87°33'47"W	373.25'
(36)	S72°53'44"W	440.88'
(37)	N78°58'38"W	288.86'

EXCEPTION #14
CALL TABLE

(38)	S15°58'38"W	182.49'
(39)	S55°00'02"E	55.37'
(40)	N44°07'38"E	108.91'
(41)	N28°48'22"W	147.25'

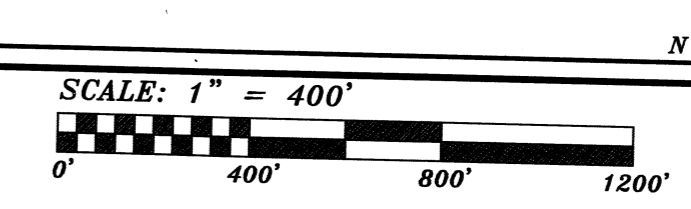


REVISOR DATE:

PREPARED BY:
JACK A. HAMILTON & ASSOCIATES, INC.
P.O. BOX 471, 342 HIGH STREET
FLUSHING, OHIO 43977
PHONE NUMBER (614)968-4947

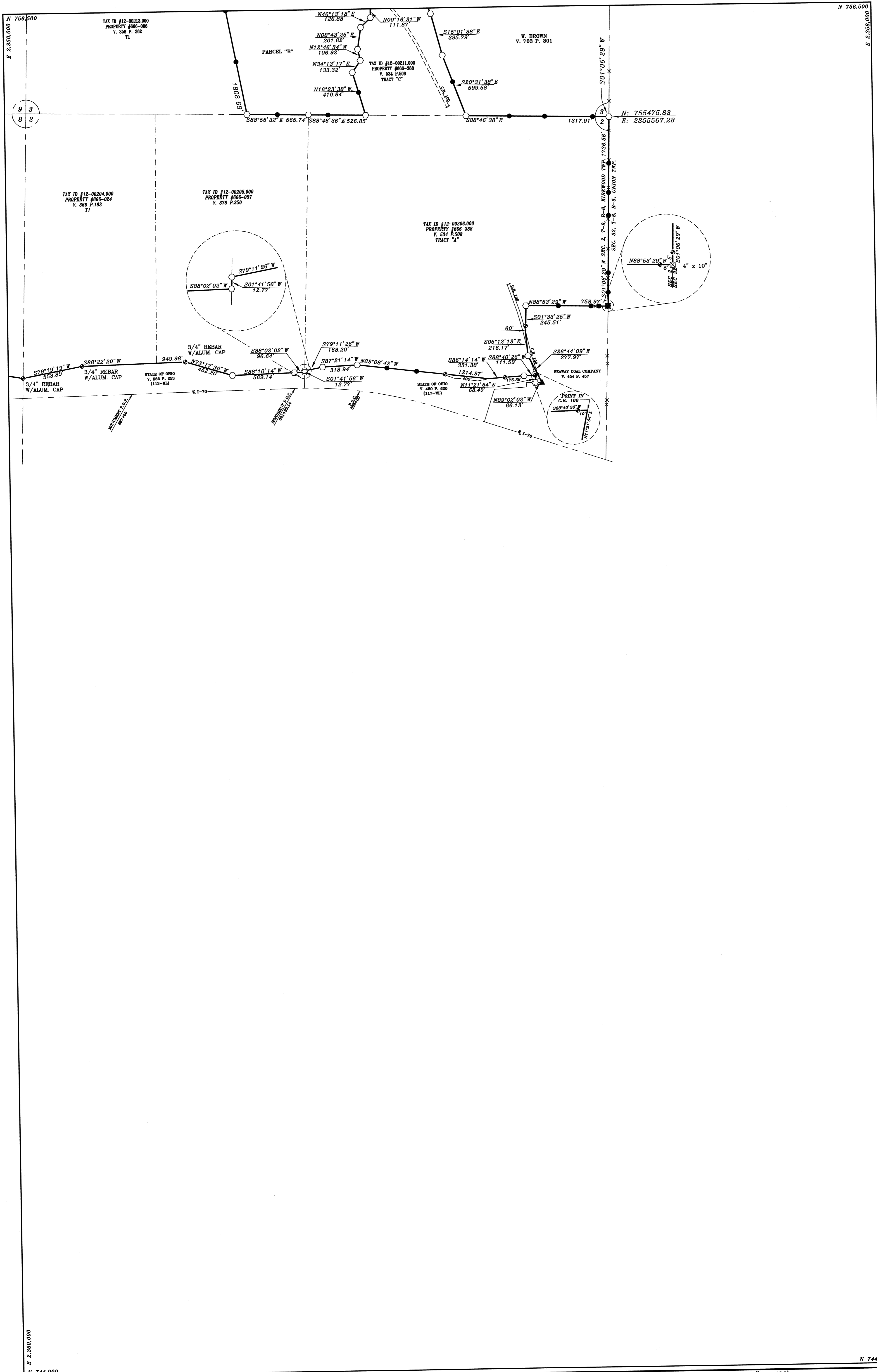
EGYPT VALLEY WILDLIFE AREA - SOUTH

SITUATED IN:
SECTIONS 8, 9 & 14, T-9 R-6, KIRKWOOD TOWNSHIP,
BELMONT COUNTY, OHIO



BASIS OF BEARINGS—GRID MERIDIAN OF THE OHIO COORDINATE SYSTEM, SOUTH ZONE, DETERMINED BY CELESTIAL & CPS OBSERVATIONS. COORDINATE SYSTEM—NAD83—OHIO SPC SOUTH ZONE. DISTANCES SHOWN HEREON ARE GRID DISTANCES BASED ON AN OVERALL COMBINED FACTOR OF 0.99996602.

SHEET 13 OF 15
DRAWN BY: L.J.B.



SHEET 14 OF 15
S-14

REVISED DATE: _____

 DRAWN BY: L.J.B.

PREPARED BY:
JACK A. HAMILTON & ASSOCIATES, INC.
 P.O. BOX 471, 342 HIGH STREET
 FLUSHING, OHIO 43977
 PHONE NUMBER (614)968-4947

EGYPT VALLEY WILDLIFE AREA - SOUTH
 SITUATED IN:
 SECTIONS 2, 3 & 9, T-9 R-6, KIRKWOOD TOWNSHIP,
 BELMONT COUNTY, OHIO

SCALE: 1" = 400'
 0' 400' 800' 1200'

BASIS OF BEARINGS—GRID MERIDIAN OF THE OHIO COORDINATE SYSTEM, SOUTH ZONE, DETERMINED BY CELESTIAL & GPS OBSERVATIONS. COORDINATE SYSTEM—NAD83—OHIO SFC SOUTH ZONE. DISTANCES SHOWN HEREON ARE GRID DISTANCES BASED ON AN OVERALL COMBINED FACTOR OF 0.99996602.

PARCEL ID/ACREAGE SUMMARY SHEET

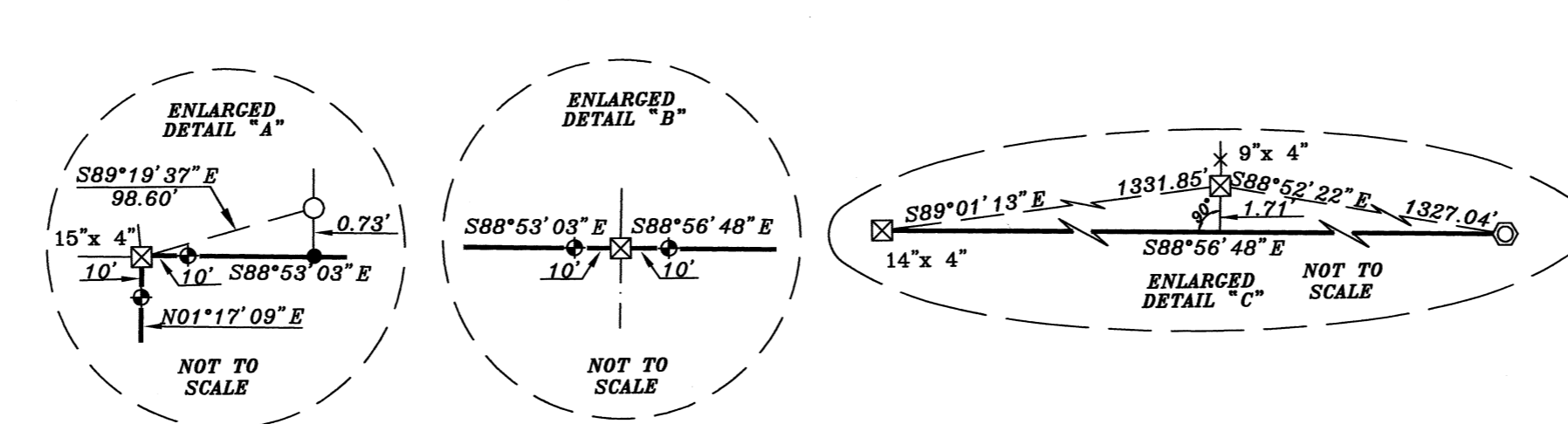
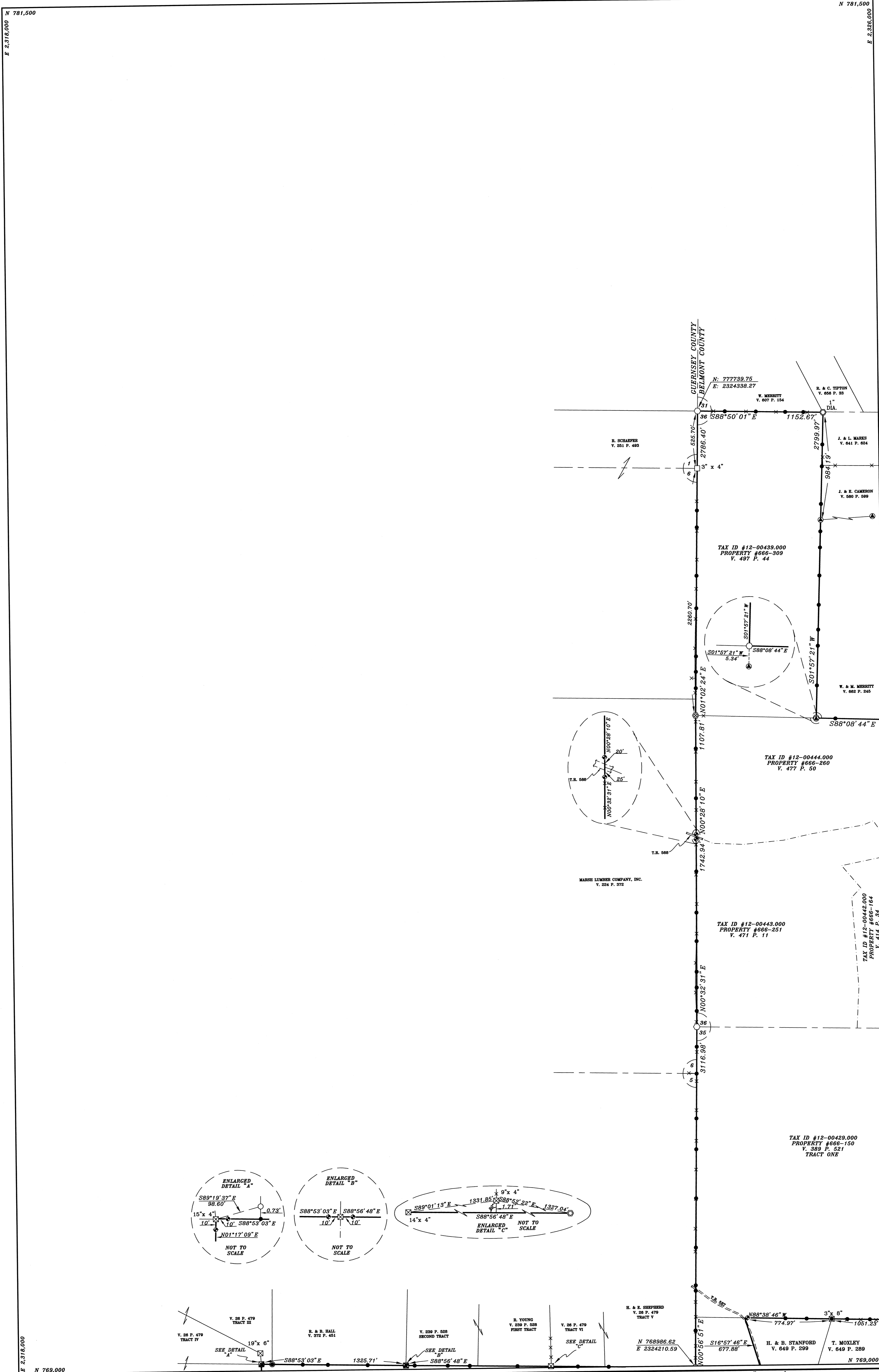
EGYPT VALLEY WILDLIFE AREA - SOUTH

KIRKWOOD TOWNSHIP

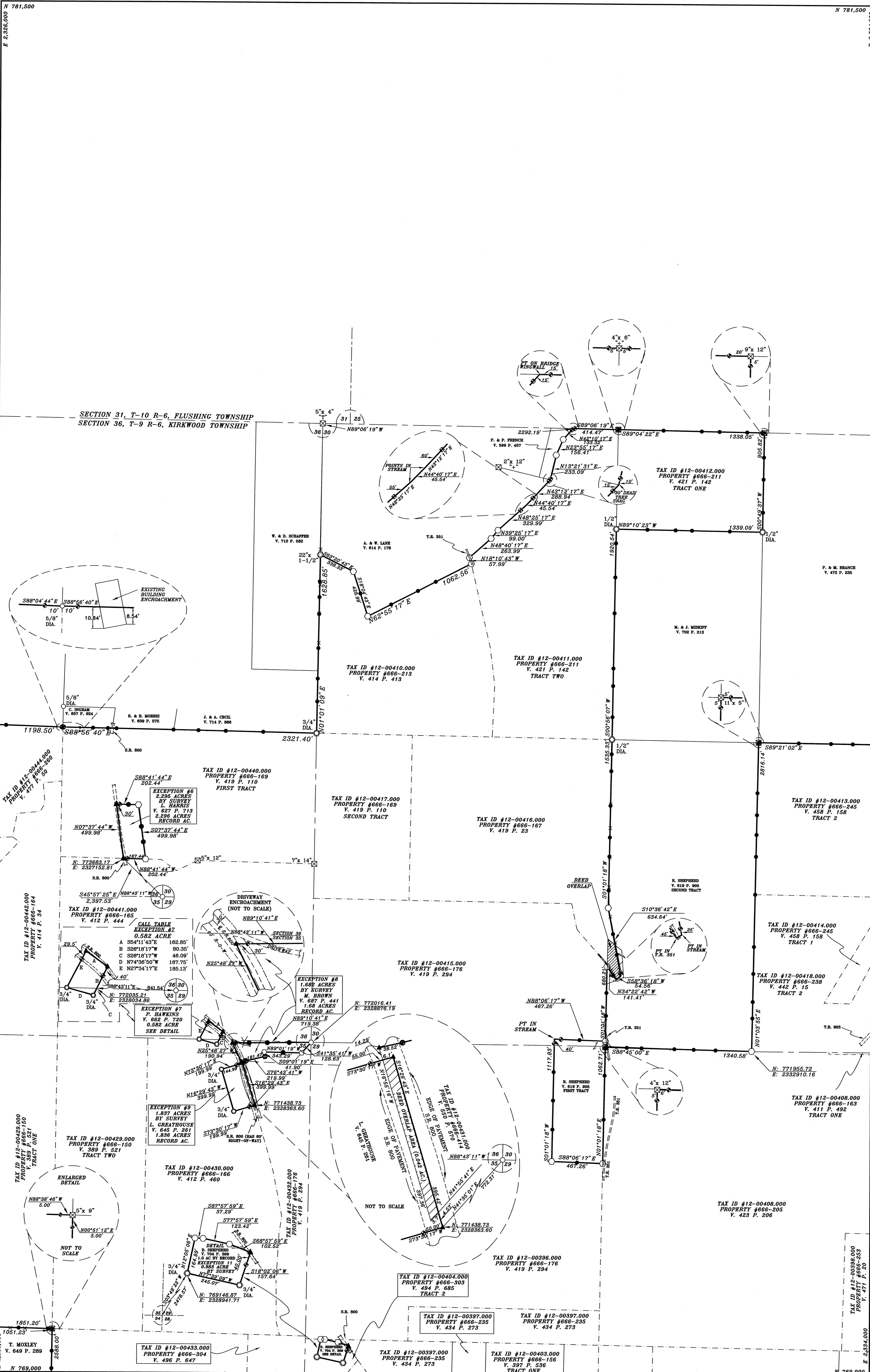
KIRKWOOD TOWNSHIP

COUNTY AUDITOR'S TAX ID #	SECTION	TWP.	RANGE	CONSOL MAP ID#	CONSOL/DUPEC PROPERTY NUMBER, PRIOR VOLUME/PAGE C = CONSOLIDATION COAL COMPANY V. 688 P. 619 D = DU PONT ENERGY COAL HOLDINGS, INC. V. 688 P. 644	RECORD DEED ACREAGE V 705 P 702	RETRACEMENT SURVEY ACREAGE
12-00204.000	2	9	6	K-2-1	C 666-024 V. 366 P. 183 T1	61.000	
12-00205.000	2	9	6	K-2-2	C 666-097 V. 378 P. 350	73.480	
12-00206.000	2	9	6	K-2-3	C 666-388 V. 534 P. 508 T1	148.410	
					TOTAL SECTION 2	282.890	279.151
12-00210.000	3	9	6	K-3-4	C 666-263 V. 484 P. 376	40.889	
12-00211.000	3	9	6	K-3-3	C 666-388 V. 534 P. 508 T2	19.305	
12-00212.000	3	9	6	K-3-1	C 666-006 V. 358 P. 262 T2	30.100	
12-00213.000	3	9	6	K-3-2	C 666-006 V. 358 P. 262 T1	73.000	
					TOTAL SECTION 3	163.294	163.912
65-00008.000	4	9	6	K-10-4	C 666-277 V. 486 P. 572	1.880	
65-00009.000	4	9	6	K-4-1	C 666-312 V. 497 P. 5 T2	11.920	
					TOTAL SECTION 4	13.800	11.750
12-00239.000	8	9	6	K-8-1	C 666-307 V. 496 P. 339	85.560	
12-00240.000	8	9	6	K-8-2	C 666-331 V. 502 P. 651 T1	46.796	
12-00241.000	8	9	6	K-8-4	C 666-234 V. 394 P. 399 T1	67.000	
12-00244.000	8	9	6	K-8-3	C 666-331 V. 502 P. 651 T2	1.120	
12-00245.000	8	9	6	K-8-5	C 666-131 V. 391 P. 663 & 666-294 V. 489 P. 65	126.128	
NO ID # LISTED	8	9	6	NO ID # LISTED	C 666-352 V. 688 P. 619	1.010	
					TOTAL SECTION 8	327.614	332.424
12-00250.000	9	9	6	K-9-1	C 666-287 V. 487 P. 647 & 666-103 V. 385 P. 293	68.971	
12-00251.000	9	9	6	K-9-2	C 666-284 V. 486 P. 556	74.060	
12-00252.000	9	9	6	K-9-3	C 666-285 V. 486 P. 553	82.528	
12-00253.000	9	9	6	K-9-6	C 666-294 V. 489 P. 65 T1	75.580	
12-00254.000	9	9	6	K-9-5	C 666-333 V. 503 P. 307	89.132	
12-00255.000	9	9	6	K-9-8	C 666-275 V. 484 P. 747 & 666-458 V. 484 P. 704	112.090	
12-00592.000	9	9	6	K-9-7	C 666-283 V. 486 P. 74	59.200	
12-00553.000	9	9	6	K-9-4	C 666-120 V. 390 P. 227 & 666-288 V. 487 P. 643	82.155	
					TOTAL SECTION 9	643.716	642.611
12-00256.000	10	9	6	K-10-4	C 666-011 V. 365 P. 148 & 666-277 V. 486 P. 572	59.740	
12-00257.000	10	9	6	K-10-1	C 666-272 V. 484 P. 391	148.903	
12-00258.000	10	9	6	K-10-2	C 666-349 V. 510 P. 385 P1 T2	110.410	
12-00259.000	10	9	6	K-10-5	C 666-312 V. 497 P. 5 T3	84.690	
12-00260.000	10	9	6	K-10-3	C 666-003 V. 385 P. 291 & 666-286 V. 486 P. 74 T2	51.000	
12-00261.000	10	9	6	K-10-6	C 666-312 V. 497 P. 5 T4	110.000	
12-00032.000	10	9	6	K-10-7	C 666-495 V. 584 P. 904	2.630	
					TOTAL SECTION 10	567.373	573.198
12-00277.000	14	9	6	K-20-7	C 666-234 V. 394 P. 399 T3	22.030	
12-00278.000	14	9	6	K-14-11	C 666-323 V. 500 P. 675 T3	25.000	
12-00279.000	14	9	6	K-14-12	C 666-252 V. 471 P. 5 T3	33.653	
12-00280.000	14	9	6	K-15-10	C 666-292 V. 488 P. 623 (ALSO INCLUDED IN SEC. 15 TAX ID #12-00304.000)	7.158	
12-00281.000	14	9	6	K-14-16	C 666-206 V. 394 P. 168	56.136	
12-00282.000	14	9	6	K-14-9	C 666-313 V. 497 P. 203	3.370	
12-00283.000	14	9	6	K-14-2	C 666-358 V. 517 P. 50 T1	10.230	
12-00284.000	14	9	6	K-14-4	C 666-301 V. 496 P. 119	1.840	
12-00285.000	14	9	6	K-14-3	C 666-358 V. 517 P. 50 T2	6.177	
12-00286.000	14	9	6	K-14-13	C 666-252 V. 471 P. 5 T4	0.347	
12-00287.000	14	9	6	K-14-15	C 666-430 V. 518 P. 88 & 666-431 V. 518 P. 86	0.250	
12-00293.000	14	9	6	K-14-1	C 666-207 V. 394 P. 178 & 666-328 V. 502 P. 155	12.489	
NO ID # LISTED	14	9	6	NO ID # LISTED	C 666-208 V. 420 P. 494	0.045	
NO ID # LISTED	14	9	6	NO ID # LISTED	C 666-208 V. 394 P. 173	6.529	
					TOTAL SECTION 14	186.264	186.196
12-00034.000	15	9	6	K-15-8	C 666-322 V. 500 P. 212	5.120	
12-00293.000	15	9	6	K-15-9	C 666-207 V. 394 P. 178 & 666-328 V. 502 P. 155	9.817	
12-00294.000	15	9	6	NO ID # LISTED	C 666-076 V. 374 P. 528 T2	1.750	
12-00295.000	15	9	6	K-15-1	C 666-323 V. 500 P. 675 T1	51.400	
12-00296.000	15	9	6	K-15-2	C 666-136 V. 405 P. 13	25.100	
12-00297.000	15	9	6	K-15-3	C 666-136 V. 405 P. 13	1.700	
12-00298.000	15	9	6	K-15-4	C 666-237 V. 441 P. 292 T1	52.880	
12-00299.000	15	9	6	K-15-13	C 666-012 V. 362 P. 239	76.120	
12-00300.000	15	9	6	K-15-14	C 666-305 V. 496 P. 210	129.000	
12-00301.000	15	9	6	K-15-12	C 666-243 V. 452 P. 517	28.750	
12-00302.000	15	9	6	K-15-11	C 666-323 V. 500 P. 675 T2	29.180	
12-00303.000	15	9	6	K-15-7	C 666-203 V. 402 P. 432	50.830	
12-00304.000	15	9	6	K-15-10	C 666-292 V. 488 P. 623 (7.158 INCLUDED IN SEC. 14 TAX ID #12-00280.000)	23.661	
12-00305.000	15	9	6	K-15-5	C 666-237 V. 441 P. 292 T2	80.470	
12-00306.000	15	9	6	K-15-6	C 666-237 V. 441 P. 292 T3	0.659	
12-00307.000	15	9	6	K-15-1	C 666-323 V. 500 P. 675	0.300	
					TOTAL SECTION 15	566.737	551.62
12-00033.000	16	9	6	K-16-5	C 666-337 V. 504 P. 71	3.000	
12-00309.000	16	9	6	K-16-8	C 666-269 V. 484 P. 385 T2	59.860	
12-00310.000	16	9	6	K-16-6	C 666-305 V. 496 P. 210	80.000	
12-00311.000	16	9	6	K-16-4	C 666-349 V. 510 P. 385 P1 T1	79.310	
12-00312.000	16	9	6	K-16 PART OF K-15-14	C 666-305 V. 496 P. 210	21.500	
12-00313.000	16	9	6	K-16-3	C 666-306 V. 496 P. 232	141.250	
12-00314.000	16	9	6	K-16-1	C 666-282 V. 488 P. 707	5.356	
12-00749.000	16	9	6	K-16-7	C 666-269 V. 484 P. 385 T1	41.262	
					TOTAL SECTION 16	431.538	440.652
12-00315.000	17	9	6	K-17-1	C 666-319 V. 499 P. 488 T2	42.500	
12-00317.000	17	9	6	K-17-2	C 666-084 V. 368 P. 346	74.730	
12-00318.000	17	9	6	K-17-5	C 666-094 V. 381 P. 562 T1	48.380	
12-00319.000	17	9	6	K-17-4	C 666-094 V. 381 P. 562 T2	15.900	
12-00320.000	17	9	6	K-17-3	C 666-094 V. 381 P. 562 T3	21.380	
					TOTAL SECTION 17	202.890	203.471
12-00331.000	20	9	6	K-20-1	C 666-254 V. 471 P. 15 T1	19.610	
12-00333.000	20	9	6	K-20-8	C 666-327 V. 501 P. 361	1.494	
12-00334.000	20	9	6	K-20-9	C 666-230 V. 417 P. 628	20.000	
12-00335.000	20	9	6	K-20-7	C 666-234 V. 394 P. 399	67.725	
12-00756.000	20	9	6	K-20-10	C 666-216 V. 394 P. 274	33.221	
					TOTAL SECTION 20	142.050	141.675
12-00340.000	21	9	6	K-21-1	C 666-334 V. 503 P. 672	80.750	
12-00341.000	21	9	6	K-21-11	C 666-310 V. 496 P. 617 T1	80.000	
12-00342.000	21	9	6	K-21-10	C 666-295 V. 489 P. 305	161.000	
12-00343.000	21	9	6	K-21-9	C 666-230 V. 417 P. 628 T1	83.000	
12-00344.000	21	9	6	K-21-8 & -6	C 666-230 V. 417 P. 628 T2 & T4	50.000	
12-00345.000	21	9	6	K-21-7	C 666-254 V. 471 P. 15 T2 & 666-230 V. 417 P. 628 T6	2.469	
12-00346.000	21	9	6	K-21-4	C 666-329 V. 502 P. 158	58.250	

COUNTY AUDITOR'S TAX ID #	SECTION	TWP.	RANGE	CONSOL MAP ID#	CONSOL/DUPEC PROPERTY NUMBER, PRIOR VOLUME/PAGE C = CONSOLIDATION COAL COMPANY V. 688 P. 619 D = DU PONT ENERGY COAL HOLDINGS, INC. V. 688 P. 644	RECORD DEED ACREAGE V 705 P 702	RETRACEMENT SURVEY ACREAGE
12-00347.000	21	9	6	K-21-3	C 666-075 V. 375 P. 627	2.000	
12-00348.000	21	9	6	K-21-2	C 666-290 V. 487 P. 651	53.294	
12-00349.000	21	9	6	K-21-5	C 666-310 V. 496 P. 617 T2	79.430	
					TOTAL SECTION 21	650.193	671.501
12-00350.000	22	9	6	K-22-3	C 666-273 V. 484 P. 380 T2	67.680	
12-00351.000	22	9	6	K-22-6	C 666-173 V. 412 P. 619	71.003	
12-00352.000	22	9	6	K-22-1	C 666-308 V. 496 P. 376	81.000	
12-00353.000	22	9	6	K-22-5	C 666-076 V. 374 P. 528	133.690	
12-00354.000	22	9	6	K-22-7 & -8	C 666-135 V. 386 P. 573	87.500	
12-00355.000	22	9	6	K-22-2	C 666-273 V. 484 P. 380 T1	94.000	
					TOTAL SECTION 22	534.873	561.054
12-00356.000	23	9	6	K-23-1 & -7	C 666-163 V. 411 P. 492 T2 & T3	109.250	
12-00357.000	23	9	6	K-23-2 & -5	C 666-253 V. 471 P. 20 T2 & T3	122.000	
12-00358.000	23	9	6	K-23-6	C 666-319 V. 499 P. 488 T1	90.250	
12-00359.000	23	9	6	K-23-4	C 666-137 V. 397 P. 536 T5	164.000	
12-00360.000	23	9	6	K-23-3	C 666-137 V. 397 P. 536 T1	157.000	
					TOTAL SECTION 23	642.500	656.390
12-00369.000	26	9	6	K-26-5 & -6	C 666-075 V. 375 P. 627 T1 & T2	96.378	
12-00370.000	26	9	6	K-26-1	C 666-255 V. 488 P. 683 T2	47.909	
12-00371.000</							



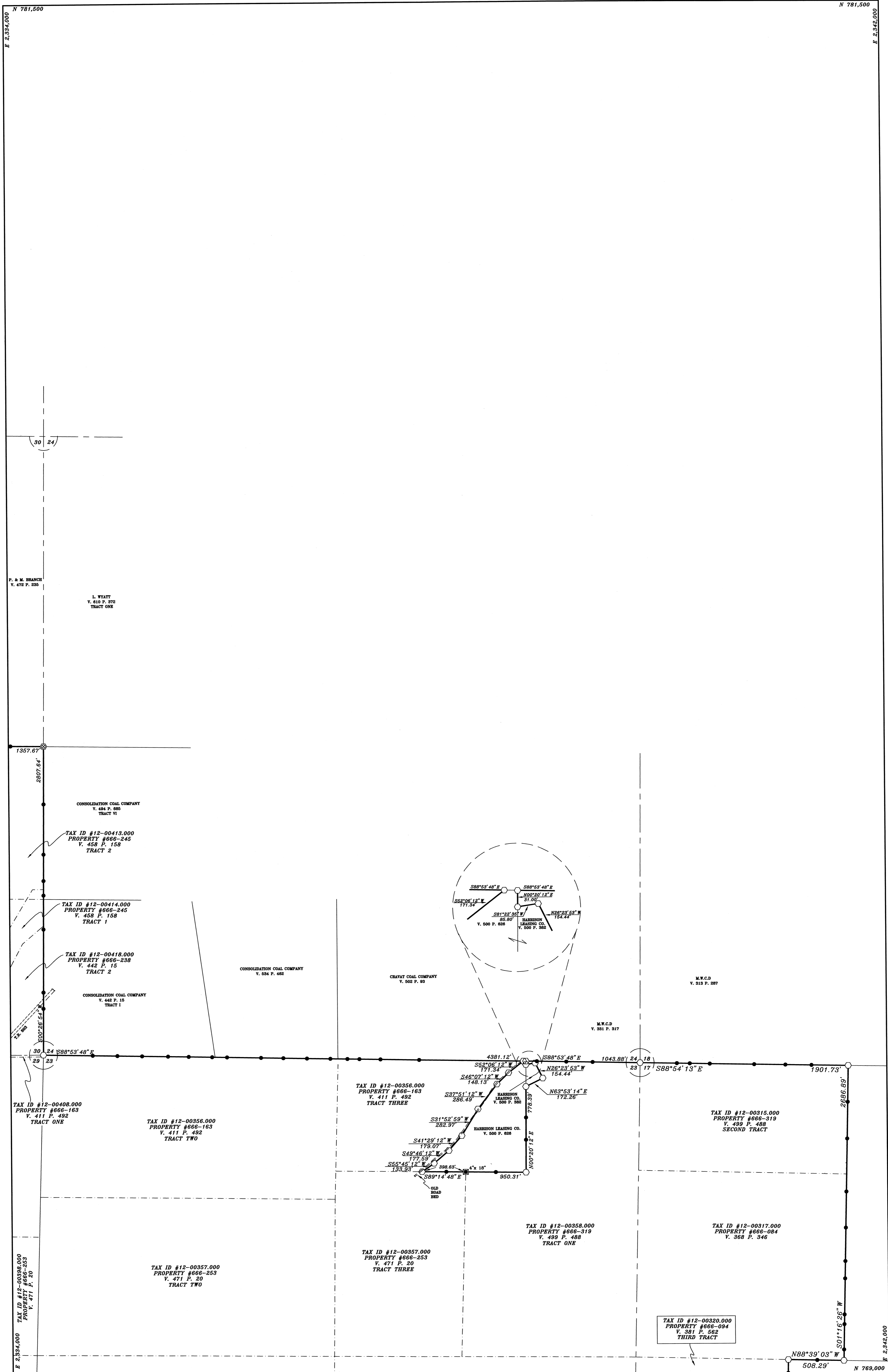
<p style="writing-mode: vertical-rl; transform: rotate(180deg);">S-2</p> <p style="writing-mode: vertical-rl; transform: rotate(180deg);">SHEET 2 OF 16</p>	REVISED DATE: _____ PREPARED BY: JACK A. HAMILTON & ASSOCIATES, INC. P.O. BOX 471, 342 HIGH STREET FLUSHING, OHIO 43977 PHONE NUMBER (614)968-4947 DRAWN BY: L.J.B.	EGYPT VALLEY WILDLIFE AREA - SOUTH SITUATED IN: SECTIONS 35 & 36, T-9 R-6, KIRKWOOD TOWNSHIP, BELMONT COUNTY SECTION 5, T-10 R-7, LONDONDERRY TOWNSHIP, GUERNSEY COUNTY	SCALE: 1" = 400' BASIS OF BEARINGS—GRID MERIDIAN OF THE OHIO COORDINATE SYSTEM, SOUTH ZONE, DETERMINED BY CELESTIAL & GPS OBSERVATIONS. COORDINATE SYSTEM—NAD83—OHIO SPC SOUTH ZONE. DISTANCES SHOWN HEREON ARE GRID DISTANCES BASED ON AN OVERALL COMBINED FACTOR OF 0.99996602.
---	--	---	--



REVISED DATE: _____
 PREPARED BY:
JACK A. HAMILTON & ASSOCIATES, INC.
 P.O. BOX 471, 342 HIGH STREET
 FLUSHING, OHIO 43977
 PHONE NUMBER (614)968-4947

EGYPT VALLEY WILDLIFE AREA - SOUTH
 SITUATED IN:
 SECTIONS 29, 30, 35 & 36, T-9 R-6, KIRKWOOD TOWNSHIP,
 BELMONT COUNTY, OHIO

SCALE: 1" = 400'
 0' 400' 800' 1200'
 BASIS OF BEARINGS—GRID MERIDIAN OF THE OHIO COORDINATE SYSTEM, SOUTH ZONE, DETERMINED BY CELESTIAL & GPS OBSERVATIONS. COORDINATE SYSTEM—NAD83—OHIO SPC SOUTH ZONE. DISTANCES SHOWN HEREON ARE GRID DISTANCES BASED ON AN OVERALL COMBINED FACTOR OF 0.99996602.



N 781,500
E 2,394,000
E 2,394,000
N 781,500

N 781,500
E 2,394,000
N 781,500
E 2,394,000

SHEET 4 OF 15
1 2 3 4 5 6 7 8 9 10 11 12 13 14 15
S-4

REVISED DATE: _____
 PREPARED BY:
JACK A. HAMILTON & ASSOCIATES, INC.
 P.O. BOX 471, 342 HIGH STREET
 FLUSHING, OHIO 43977
 PHONE NUMBER (614)968-4947

EGYPT VALLEY WILDLIFE AREA - SOUTH
 SITUATED IN:
 SECTIONS 17, 18, 23, 24 & 30, T-9 R-6, KIRKWOOD TOWNSHIP,
 BELMONT COUNTY, OHIO

SCALE: 1" = 400'
 0' 400' 800' 1200'

BASIS OF BEARINGS-GRID MERIDIAN OF THE OHIO COORDINATE SYSTEM, SOUTH ZONE, DETERMINED BY CELESTIAL & GPS OBSERVATIONS. COORDINATE SYSTEM-NAD83-OHIO SPC SOUTH ZONE. DISTANCES SHOWN HEREON ARE GRID DISTANCES BASED ON AN OVERALL COMBINED FACTOR OF 0.99996602.

N 781,500

N 781,500

E 2,344,000

E 2,350,000

N 769,000

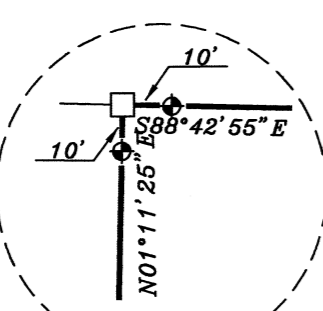
N 769,000

E 2,344,000

E 2,350,000

18 12
17 11

M.W.C.D.
V. 315 P. 479
1st PARCEL



M.W.C.D.
V. 308 P. 582
N 769,038.33
E 2,345,758.73

1370.57

QTR. COR.

1234
6789
10
S-5
SHEET 5 OF 15

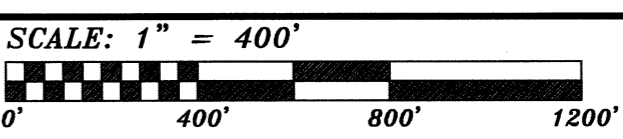
REVISED DATE:

DRAWN BY: L.J.B.

PREPARED BY:
JACK A. HAMILTON & ASSOCIATES, INC.
P.O. BOX 471, 342 HIGH STREET
FLUSHING, OHIO 43977
PHONE NUMBER (614)968-4947

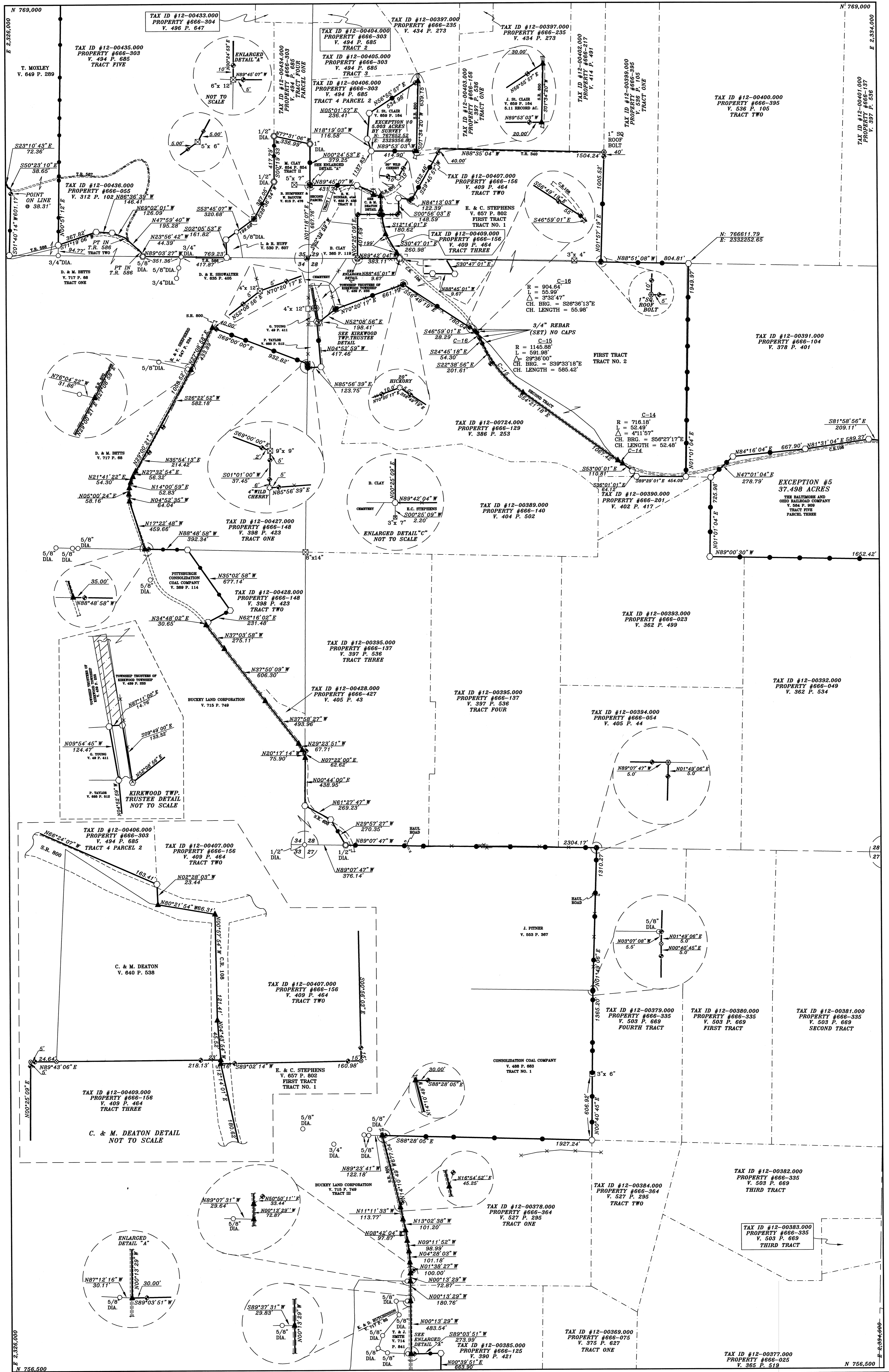
EGYPT VALLEY WILDLIFE AREA - SOUTH

SITUATED IN:
SECTION 17, T-9 R-6, KIRKWOOD TOWNSHIP,
BELMONT COUNTY, OHIO



BASIS OF BEARINGS—GRID MERIDIAN OF THE OHIO COORDINATE SYSTEM, SOUTH ZONE, DETERMINED BY CELESTIAL & GPS OBSERVATIONS. COORDINATE SYSTEM—NAD83—OHIO SPC SOUTH ZONE. DISTANCES SHOWN HEREON ARE GRID DISTANCES BASED ON AN OVERALL COMBINED FACTOR OF 0.99996602.



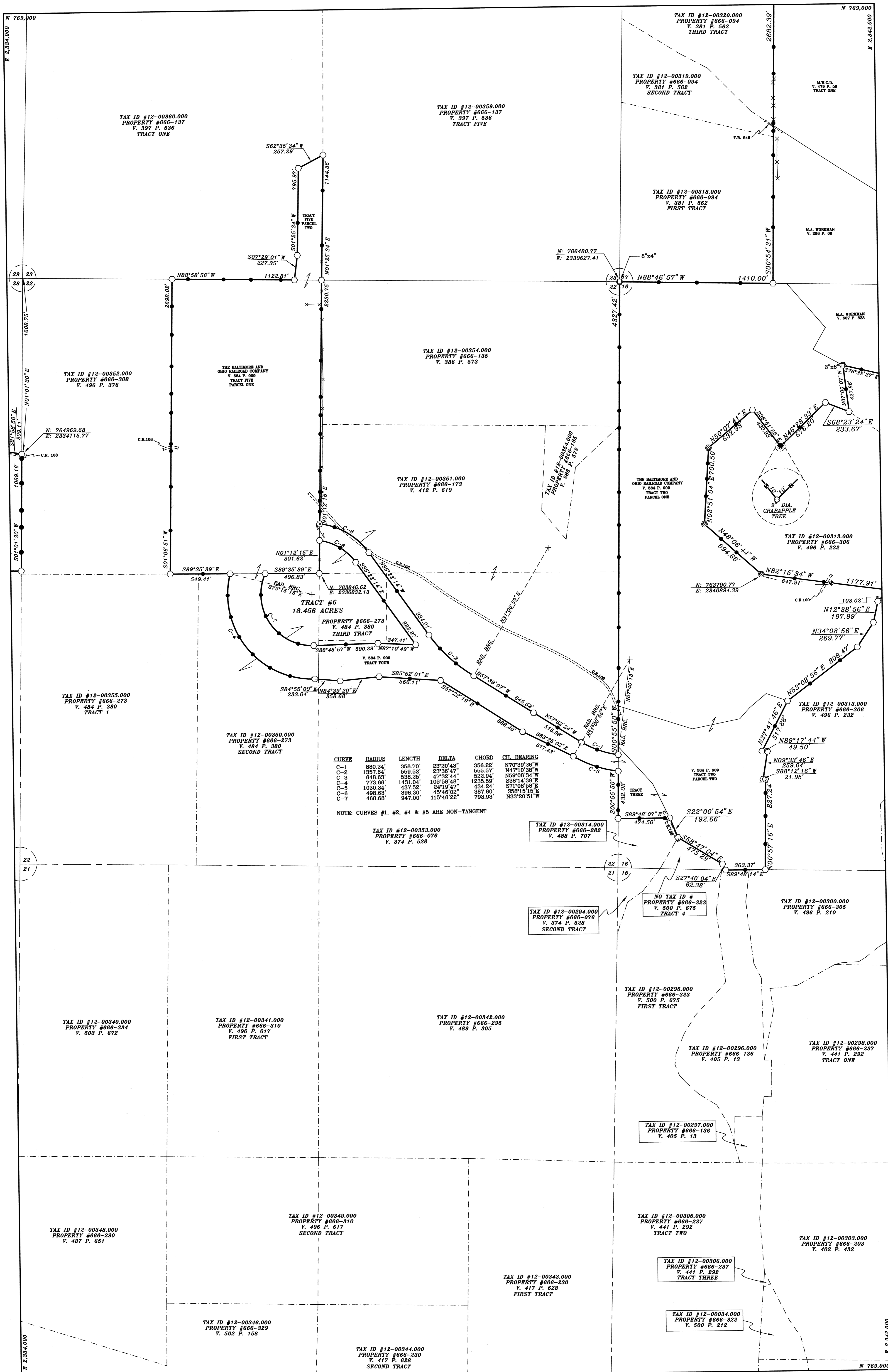


S-7
 SHEET 7 OF 15
 DRAWN BY: L.J.B.

REVISED DATE:
 PREPARED BY:
JACK A. HAMILTON & ASSOCIATES, INC.
 P.O. BOX 471, 342 HIGH STREET
 FLUSHING, OHIO 43977
 PHONE NUMBER (614)968-4947

EGYPT VALLEY WILDLIFE AREA - SOUTH
 SITUATED IN:
 SECTIONS 27, 28, 29, 34 & 35, T-9 R-6, KIRKWOOD TOWNSHIP,
 BELMONT COUNTY, OHIO

SCALE: 1" = 400'
 0' 400' 800' 1200'
 BASIS OF BEARINGS-GRID MERIDIAN OF THE OHIO COORDINATE SYSTEM, SOUTH ZONE, DETERMINED BY CELESTIAL & GPS OBSERVATIONS. COORDINATE SYSTEM-NAD83-OHIO SPC SOUTH ZONE. DISTANCES SHOWN HEREON ARE GRID DISTANCES BASED ON AN OVERALL COMBINED FACTOR OF 0.99996602.

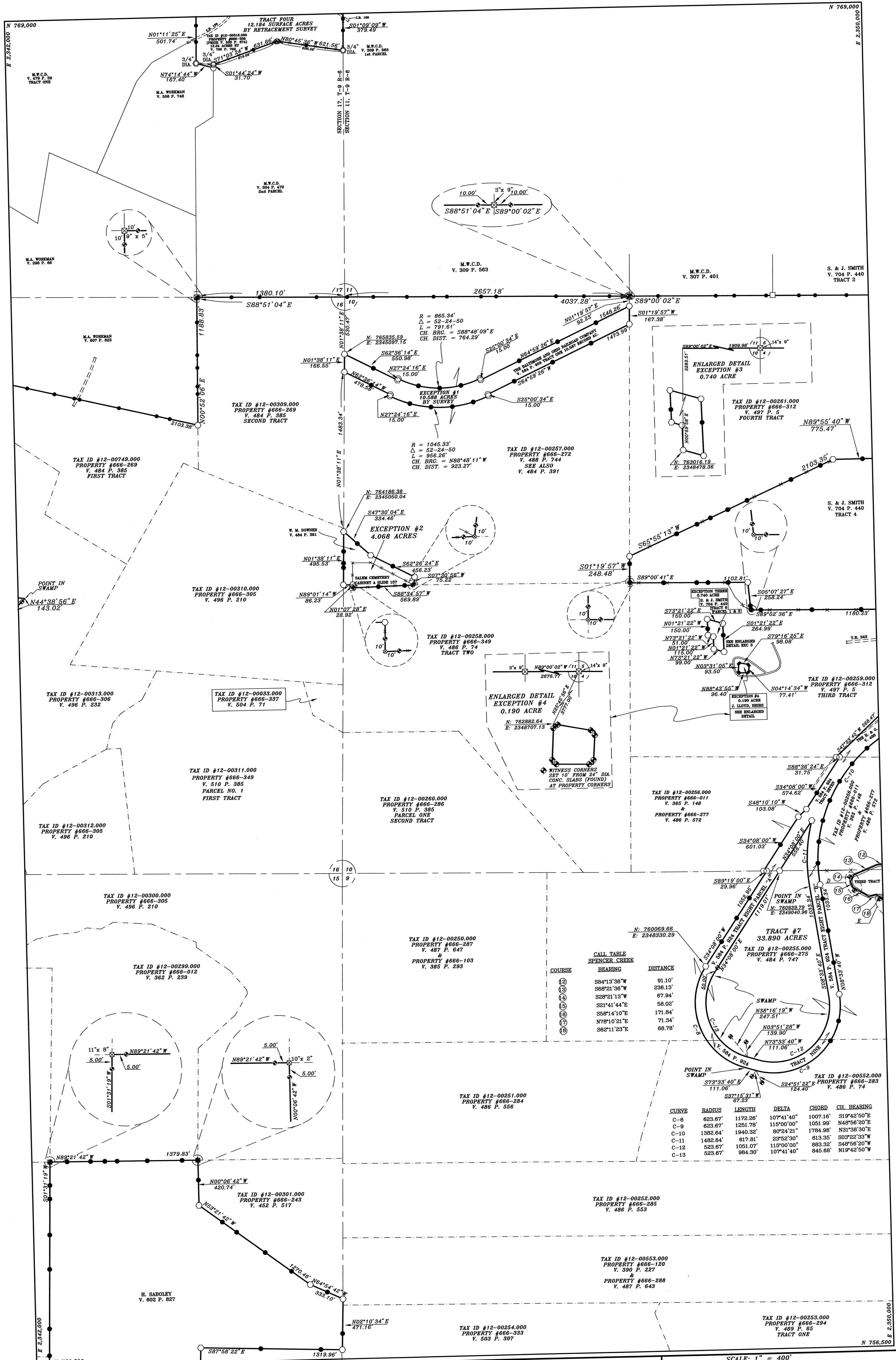


8-3
SHEET 8 OF 15
DRAWN BY: L.J.B.

REVISED DATE: _____
PREPARED BY:
JACK A. HAMILTON & ASSOCIATES, INC.
P.O. BOX 471, 342 HIGH STREET
FLUSHING, OHIO 43977
PHONE NUMBER (614)968-4947

EGYPT VALLEY WILDLIFE AREA - SOUTH
SITUATED IN:
SECTIONS 15, 16, 21, 22 & 23, T-9 R-6, KIRKWOOD TOWNSHIP,
BELMONT COUNTY, OHIO

SCALE: 1" = 400'
0' 400' 800' 1200'
BASIS OF BEARINGS-GRID MERIDIAN OF THE OHIO COORDINATE SYSTEM, SOUTH ZONE, DETERMINED BY CELESTIAL & GPS OBSERVATIONS. COORDINATE SYSTEM-NAD83-OHIO SPC SOUTH ZONE. DISTANCES SHOWN HEREON ARE GRID DISTANCES BASED ON AN OVERALL COMBINED FACTOR OF 0.99996602.



EGYPT VALLEY WILDLIFE AREA - SOUTH

SITUATED IN:
SECTIONS 9, 10, 15, 16 & 17, T-9 R-6, KIRKWOOD TOWNSHIP,
BELMONT COUNTY, OHIO

SCALE: 1" = 400'

BASIS OF BEARINGS-GRID MERIDIAN OF THE OHIO COORDINATE SYSTEM, SOUTH ZONE, DETERMINED BY CELESTIAL & GPS OBSERVATIONS. COORDINATE SYSTEM-NAD83-OHIO SFC SOUTH ZONE. DISTANCES SHOWN HEREON ARE GRID DISTANCES BASED ON AN OVERALL COMBINED FACTOR OF 0.99996602.

REVISED DATE: _____

PREPARED BY:
JACK A. HAMILTON & ASSOCIATES, INC.
P.O. BOX 471, 342 HIGH STREET
FLUSHING, OHIO 43977
PHONE NUMBER (614)968-4947

DRAWN BY: L.J.B.

SHEET 9 OF 15