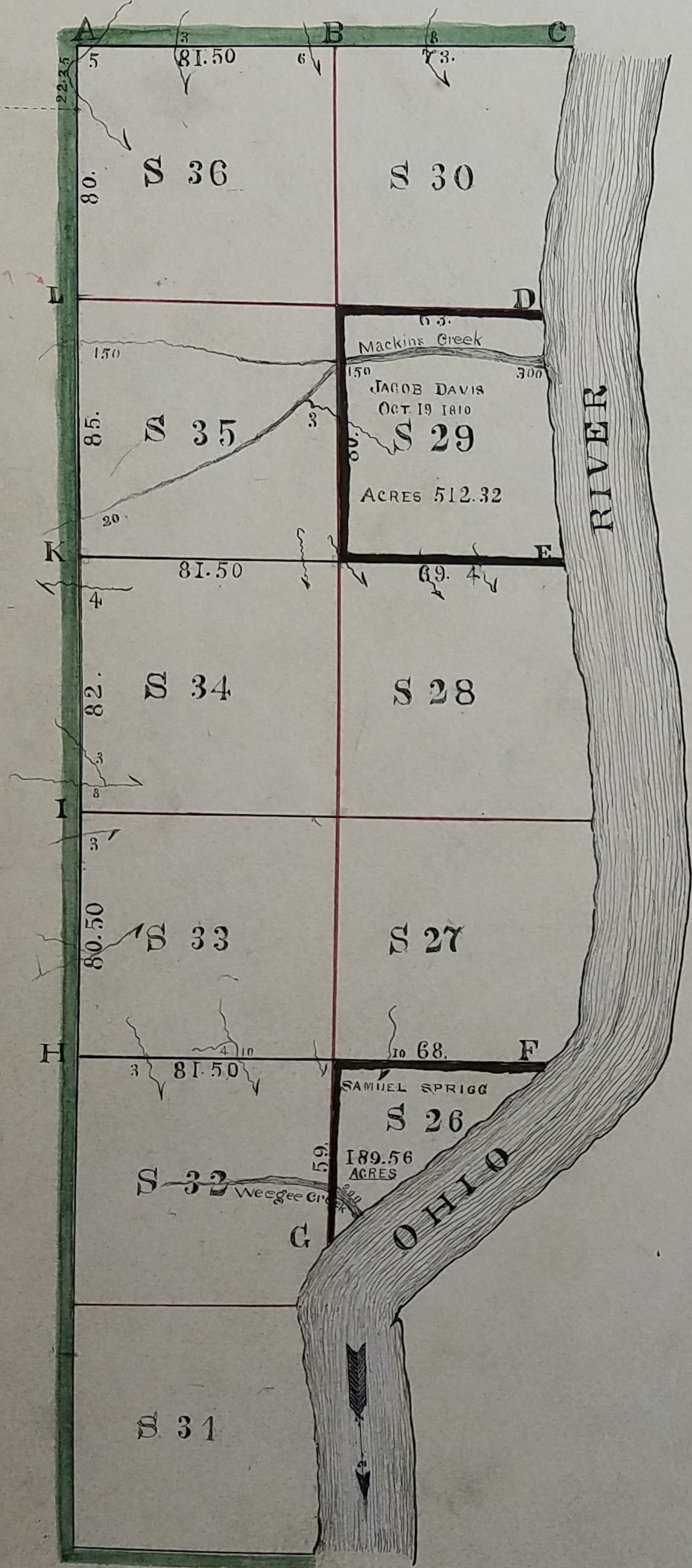


TOWNSHIP No. II RANGE No. II



COURSES AND DISTANCES FROM D		
DOWN THE RIVER.		
S 04° W	13.75	
SOUTH	15.75	
S 05° E	11.	
S 07° E	25.	
S 10° E	15.	TO E
FROM F DOWN THE RIVER		
S 45° W	17.	
S 55° W	43.50	
S 45° W	8.50	
S 37° W	16.50	TO G

N.B. This TOWNSHIP being all sold at New York except fractions No. 26 and 29. The present survey is extended no farther than to ascertain the number of acres of those fractions.

SCALE OF 40 CHAINS TO AN INCH.

A TRUE COPY

DAVID HOGG
REG.

A TRUE COPY
BY
JOHN A. BOND
1894

DESCRIPTION OF TOWNSHIP No. II RANGE No. II.

POSTS	BEARING TREES	INCHES DIAM.	COURSE THEY BEAR	LINKS DIST.	POSTS	BEARING TREES	INCHES DIAM.	COURSE THEY BEAR	LINKS DIST.
A	BEECH	18	N 51 E	06	F	SUGAR TREE	15	N 29 W	20
	SUGAR TREE	15	S 74 W	50		ELM	05	CORNER - TREE	
B	ASH	18	S 76 E	16		SYCAMORE	24	S 32 W	65
	B. OAK	16	N 58 W	36	G	SYCAMORE	24	S 41 E	23
C	HICKORY	14	S 28 E	20		Do	36	N 64 E	31
	B. OAK	16	CORNER - TREE		H	W. OAK	15	N 33 E	08
	B. OAK	20	N 16 W	33		B. OAK	24	CORNER - TREE	
D	SUGAR TREE	30	N 33 W	15		W. OAK	12	S 48 W	17
	SUGAR TREE	18	CORNER - TREE		I	LINN	30	S 32 E	21
	ELM	12	S 33 E	40		BEECH	15	S 13 W	24
E	BEECH	10	S 31 W	16	K	W. OAK	12	N 31 E	18
	SUGAR TREE	04	CORNER - TREE			Do	18	S 49 W	25
	ELM	15	N 41 E	35	L	POST SET NO. BEARING TAKEN			
						I DID NOT FIND THE OLD POST			

INTERIOR SECTION CORNERS DESCRIBED.

SECTION CORNERS	BEARING TREES	INCHES DIAM.	COURSE THEY BEAR	LINKS DIST.
26-27 32-33	BEECH	06	S 26 E	04
	SUGAR TREE	10	N 06 W	24
28-29 34-35	Do	04	S 33 E	18
	Do	15	N 82 W	40
29-30 35-36	ASH	04	N 12 W	13
	ELM	05	CORNER - TREE	
	SUGAR TREE	06	S 15 E	35

A TRUE COPY
DAVID HOGE REC.

A TRUE COPY
BY
JOHN A. BOND
1894.