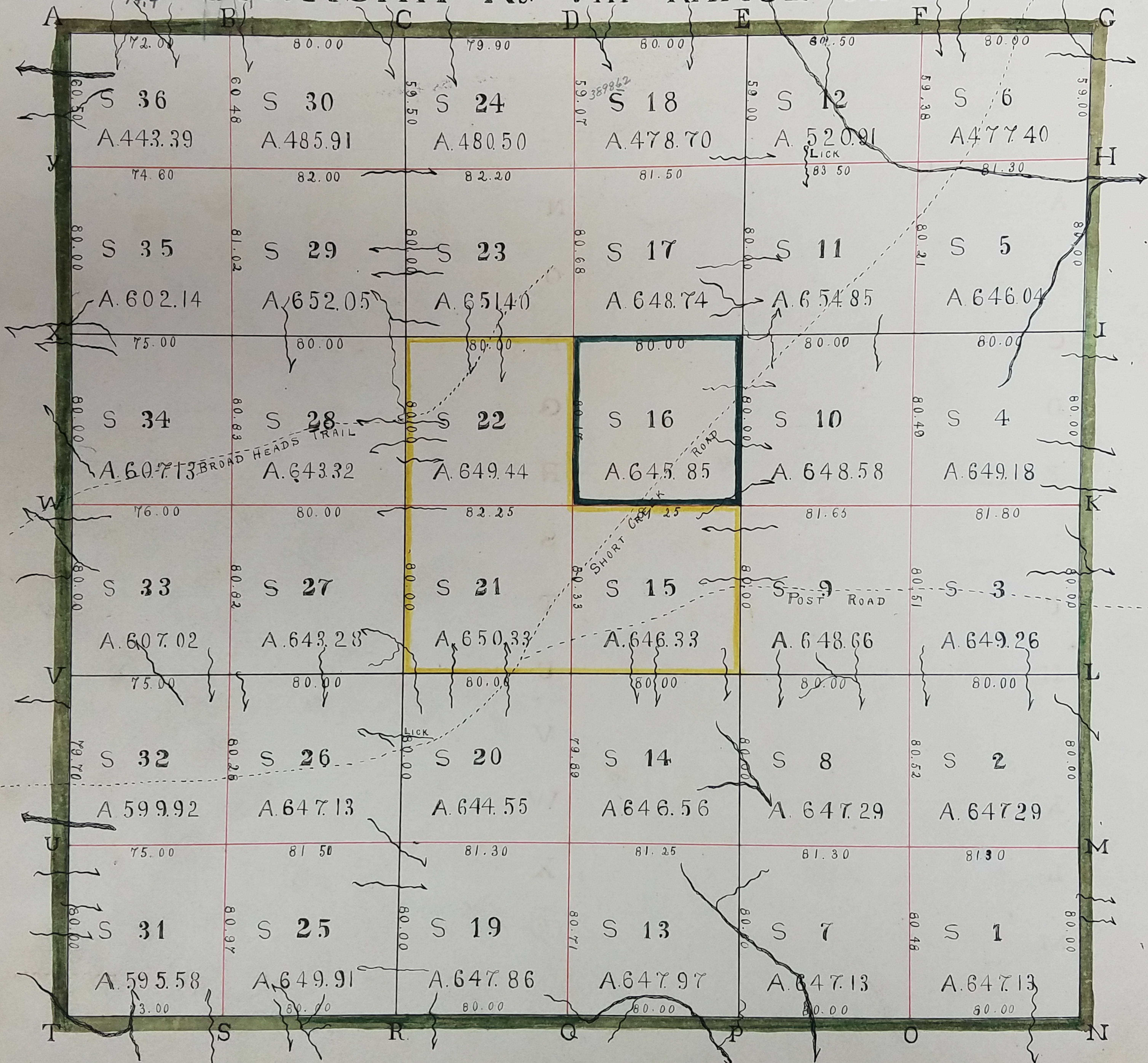


# TOWNSHIP No. VIII RANGE No. V.



SCALE OF 40 CHAINS TO AN INCH



A TRUE COPY  
 DAVID HOGE REQ

A TRUE COPY  
 BY  
 JOHN A. BOND  
 1894

## DESCRIPTION OF TOWNSHIP No. VIII RANGE No. V

POSTS	BEARING TREES	INCHES DIAM.	COURSE THEY BEAR	LINKS DISTANT	POSTS	BEARING TREES	INCHES DIAM.	COURSE THEY BEAR	LINKS DISTANT
A	W. OAK	10	N 19 E	21	N	W. OAK	13	N 60 E	15
	DO	09	S 65 1/2 W	24		DO	17	S 38 W	27
B	DO	12	N 23 E	36	O	DO	15	N 44 W	53 1/2
	B. OAK	18	S 34 E	47		DO	18	S 44 E	07 1/2
C	W. OAK	10	N 23 E	22 1/2	P	HICKORY	11	S 58 1/2 W	13 1/2
	DO	07	S 28 W	15 1/2		W. OAK	13	N 16 W	48 1/2
D	DO	08	N 60 W	48	Q	DO	16	N 44 W	33
	B. OAK	13	S 26 E	10		DO	12	N 83 E	42
E	W. OAK	40	N 20 W	25	R	DO	11	N 60 E	16 1/2
	HICKORY	07	S 37 E	05		DO	15	S 35 E	12
F	W. OAK	15	N 3 E	42	S	DO	13	N 20 W	20 1/2
	DO	36	S 6 E	44 1/2		DO	13	S 32 E	38 1/2
G	DO	12	N 7 E	40	T	DO	17	N 9 E	41
	DO	08	S 40 1/2 W	24		DO	17	S 39 W	09 1/2
H	DO	18	S 7 W	06 1/2	U	SUGARTREE	20	S 87 E	55 1/2
	DO	13	N 13 1/2 E	27		DO	22	N 33 W	77 1/2
I	DO	15	N 14 W	35 1/2	V	POPLAR	09	N 45 1/2 W	30
	DO	12	N 86 E	18		W. OAK	13	S 34 E	23
K	DO	16	N 46 E	03 1/2	W	SUGARTREE	10	N 28 W	45 1/2
	SUGARTREE	11	S 6 W	37		DO			27
L	W. OAK	15	N 59 W	28	X	B. WALNUT	17	N 30 E	25
	DO	14	S 64 1/2 E	14 1/2		B. OAK	21	SOUTH	10
M	DO	11	N 67 E	25	Y	POPLAR	13	N 31 E	44
	DO	11	N 67 W	50 1/2		SUGARTREE	16	S 44 W	30 1/2

RED-LINES  
TOWNSHIP No. VIII RANGE No. V CONTINUED.  
QUARTER SECTION POSTS

QUARTER POSTS	BEARING TREES	INCHES DIAM.	COURSE THEY BEAR	LINKS DISTANT	QUARTER POSTS	BEARING TREES	INCHES DIAM.	COURSE THEY BEAR	LINKS DISTANT	QUARTER POSTS	BEARING TREES	INCHES DIAM.	COURSE THEY BEAR	LINKS DISTANT
BETWEEN SECTIONS 5. 6	HICKORY	12	N 20 E	22½	BETWEEN SECTIONS 17. 18	MAPLE	14	S 48½ E	48	BETWEEN SECTIONS 29. 30	GUM	22	S 72 W	03½
	DO	07	S 4 E	05		HICKORY	12	N 63 W	39		BEECH	10	N 33½ E	46
6. 12	W. OAK	16	S 54½ E	28	18. 24	W OAK	24	N 54½ E	10½	30. 36	DO	13	S 44 W	25
	B. OAK	20	N 21½ W	52		GUM	11	S 74 W	21		SUGARTREE	10	S 46 E	34
5. 11	HICKORY	12	S 71 W	24½	17. 23	W. OAK	15	S 42½ W	34	29. 35	W. OAK	14	N 89 W	77
	W. OAK	12	N 19 W	49		DO	08	N 68½ E	30		DO	10	S 14 E	60
11. 12	DO	24	N 60½ E	16	23. 24	DO	12	S 39 E	22½	35. 36	CHESTNUT	32	N 80½ W	39
	DO	13	S 66½ W	08		DO	26	N 60½ W	62		SUGARTREE	12	S 47 E	32
3. 4	DO	24	N 7 E	10	15. 16	HOLLOWPOPLAR	48	S 70½ E	08	27. 28	B. WALNUT	14	S 14½ E	05
	HICKORY	10	S 57½ E	27½		HICKORY	07	S 76 W	30½		DO	11	N 7 E	32
4. 10	DO	08	S 52 W	16	16. 22	W. OAK	12	N 2½ W	25	28. 34	W. OAK	15	N 26½ E	14
	BEECH	08	S 9 W	25		DO	13	N 88½ W	07		DO	14	S 51 E	12
3. 9	W. OAK	18	N 24½ W	25½	15. 21	DO	15	N 37 E	25½	27. 33	HICKORY	08	S 20½ E	20
	B. OAK	19	N 52½ E	50		BEECH	12	N 69½ W	19		DO	07	S 69 W	34½
9. 10	W. OAK	18	N 29½ W	45	21. 22	W. OAK	24	N 84 E	14	33. 34	W. WALNUT	10	S 8½ E	99½
	DO	18	S 25 E	20		B. OAK	20	WEST	58		DOUBLEELM	48	WEST	1.44
1. 2	B. OAK	18	S 3 W	33	13. 14	W. OAK	11	CORNER TREE		25. 26	W. OAK	16	N 60½ E	50
	W. OAK	12	N 42 W	33		DO	12	S 55½ W	41½		HICKORY	11	N 73½ W	39
2. 8	DO	11	N 54½ E	09½		DO	12	N 58½ E	36	26. 32	W. OAK	12	N 53½ W	20
	DO	09	S 44½ E	11½	14. 20	DO		S 35 W	16½		HICKORY	10	S 18½ E	36½
1. 7	DO	12	N 30 W	33		HICKORY	26	N 7½ W	39½	25. 31	DO	11	N 6 E	42
	DO	19	S 82 W	31	13. 19	W. OAK	12	N 21 W	17½		DO	15	S 35½ E	45
7. 8	DO	12	N 23 W	00½		B. OAK	18	N 52½ E	22	31. 32	W. OAK	16	N 9½ E	22½
	DO	14	S 26 W	21½	19. 20	HICKORY	11	S 31 W	27		DO	20	S 4 W	37½
						DO	11	N 8½ W	40					

# TOWNSHIP No. VIII RANGE No. V CONTINUED

## INTERIOR SECTION CORNERS BLACK LINES

SECTION CORNERS	BEARING TREES	INCHES DIAM.	COURSE THEY BEAR	LINKS DISTANT	SECTION CORNERS	BEARING TREES	INCHES DIAM.	COURSE THEY BEAR	LINKS DISTANT
7 8 13 14	W. OAK	14	N 48 W	61	20 21 26 27	BEECH	10	S 6 1/2 W	11
	DO	15	S 70 E	53		DO	10	N 60 E	27
8 9 14 15	DO	13	N 61 E	05 1/2	14 15 20 21	W. OAK	20	N 82 W	52
	DO	11	N 78 1/2 W	27 1/2		DO	10	S 59 W	41 1/2
2 3 8 9	DO	13	S 34 W	09	26 27 32 33	DO	13	N 78 E	10
	DO	13	N 26 E	23 1/2		DO	11	S 80 W	18
9 10 15 16	DO	12	N 10 1/2 E	33 1/2	21 22 27 28	DO	13	N 73 1/2 W	31
	DO	14	S 12 W	53 1/2		BEECH	09	S 67 E	34
10 11 16 17	DO	12	N 68 E	50	22 23 28 29	W. OAK	12	N 30 E	43
	DO	16	S 56 W	09		DO	12	N 60 W	48
4 5 10 11	DO	14	N 32 1/2 W	37	16 17 22 23	POPLAR	08	S 85 1/2 W	08
	DO	15	S 62 E	33 1/2		W. OAK	14	N 47 E	10 1/2
11 12 17 18	CHERRY TREE	11	S 88 1/2 E	29	28 29 34 35	DO	12	S 77 E	26
	W. OAK	13	S 84 1/2 W	38 1/2		B. OAK	13	N 67 W	20
19 20 25 26	DO	16	N 29 W	26	23 24 29 30	DO	07	S 77 1/2 E	58
	HICKORY	10	N 68 E	33		DO	15	S 55 W	61

## INTERIOR SECTION CORNERS RED LINES

SECTION CORNERS	BEARING TREES	INCHES DIAM.	COURSE THEY BEAR	LINKS DISTANT	SECTION CORNERS	BEARING TREES	INCHES DIAM.	COURSE THEY BEAR	LINKS DISTANT
5 6 11 12	ELM	42	N 70 W	15 1/2	13 14 19 20	W. OAK	15	S 27 1/2 W	20 1/2
	BUCKEYE	10	S 28 1/2 E	59		B. OAK	20	N 9 1/2 E	12 1/2
3 4 9 10	W. OAK	12	N 34 E	18	29 30 35 36	W. OAK	11	S 10 1/2 E	11
	B. OAK	24	S 28 W	46		CHESTNUT	11	N 12 E	48
1 2 7 8	W. OAK	20	S 42 W	14 1/2	27 28 33 34	B WALNUT	36	S 27 E	18 1/2
	DO	14	N 23 E	36 1/2		SUGARTREE	12	N 8 W	19
17 18 23 24	W OAK	22	N 58 1/2 W	04	25 26 31 32	HICKORY	10	N 77 1/2 W	14
	DO	16	N 77 E	41		W. OAK	10	S 73 E	53 1/2
15 16 21 22	B. OAK	22	WEST	33 1/2					
	W. OAK	10	N 29 1/2 E	15					

(A TRUE COPY)  
DAVID HOCE REC.

A TRUE COPY  
BY  
JOHN A BOND  
1894