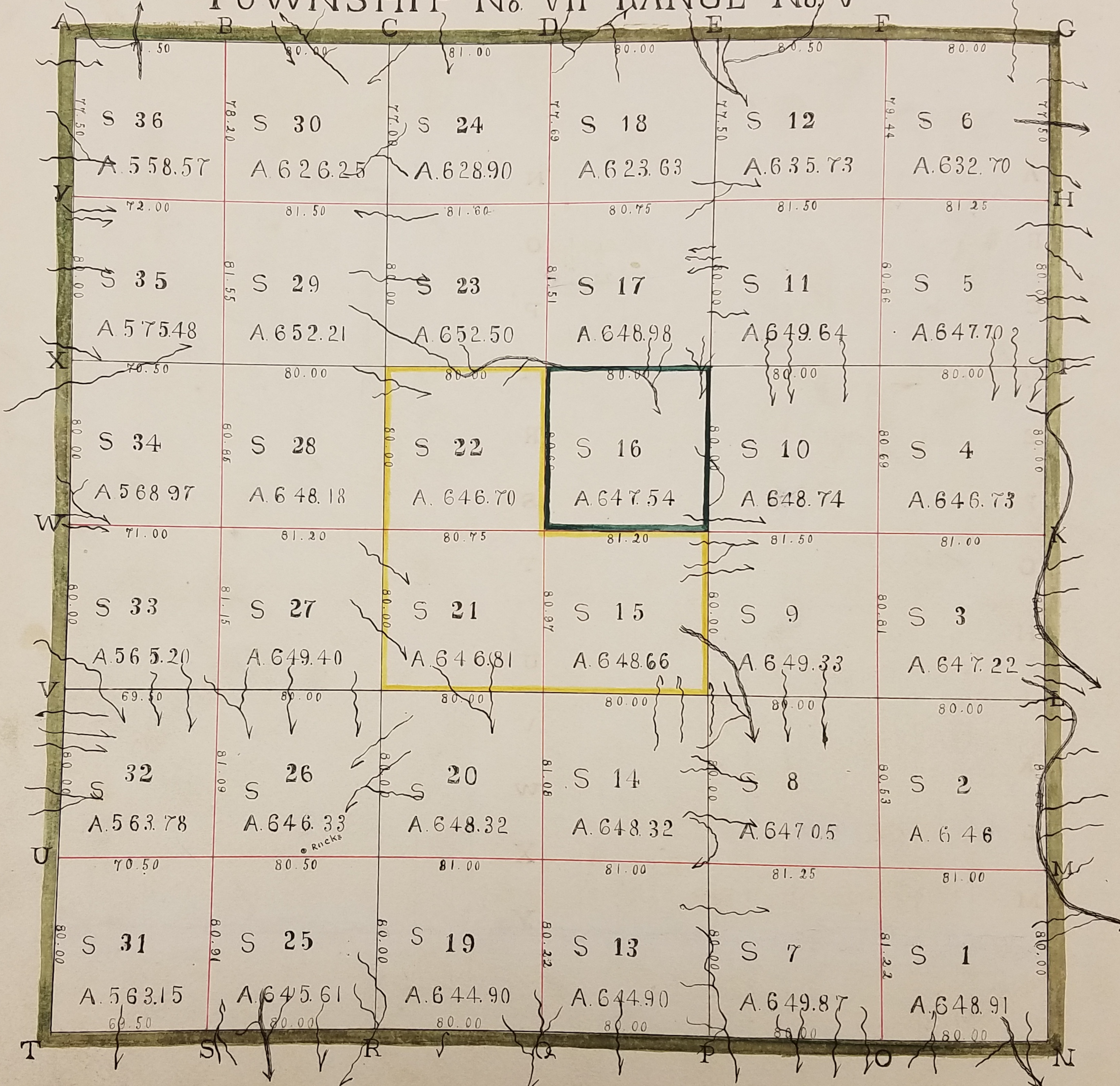


TOWNSHIP No. VII RANGE No. V



SCALE OF 40 CHAINS TO AN INCH



A TRUE COPY
DAVID HOCE REC.

A-TRUE COPY
BY
JOHN A. BOND
1894

DESCRIPTION OF TOWNSHIP No. VII RANGE No. V

POSTS	BEARING TREES	INCHES DIAM.	COURSE THEY BEAR	LINKS DISTANT	POSTS	BEARING TREES	INCHES DIAM.	COURSE THEY BEAR	LINKS DISTANT
A	HICKORY	10	S 2 E	24	N	GUM	09	N 84 E	09
	DO	15	N 45 W	33½		W. OAK	14	N 75 W	24½
B	W. OAK	17	N 16 E	31	O	DO	12	N 54 W	15½
	ELM	09	S 09½ E	22		DO	14	S 25 E	13½
C	SUGARTREE	16	N 5 W	40	P	DO	14	S 68 W	02
	W. OAK	13	S 76 W	28		MAPLE	10	N 68 E	02
D	DO	12	N 24 E	06	Q	W. OAK	10	S 54 W	42
	DO	15	S 6½ W	14		DO	15	N 50 E	59
E	DO	34	S 65 W	19	R	DO	12	N 37 E	04½
	DO	13	N 10 E	41		HICKORY	09	S 21 W	31
F	DO	15	N 44 W	53½	S	W. OAK	16	N 32 W	05
	DO	18	S 44 E	07½		DO	16	S 1 E	40
G	DO	13	N 60 E	15	T	W. OAK	13	CORNER TREE	
	DO	17	S 38 W	27½		DO	17	N 9 E	41
H	DO	18	S 40 W	05½		DO	17	S 39 W	09½
	DOGWOOD	06	N 82 E	04	U	B. OAK	12	S 4 W	30
I	W. OAK	16	N 4 W	19		W. OAK	12	N 6 E	37
	DO	11	S 7 E	46	V	DO	14	NORTH	69
K	DO	10	N 74½ E	29		DO	14	S 51½ E	20
	CHERRYTREE	06	S 27 W	22	W	SUGARTREE	10	N 73 E	39½
L	HICKORY	10	SOUTH	06		W. OAK		N 53 W	28
	W. OAK	13	N 66 W	23	X	DO	16	N 40 E	04
M	DO	12	N 38 E	12		DO	11	S 3½ E	22½
	DO	12	S 89 W	18	Y	DO	15	SOUTH	14½
						DO	18	N 71 E	16

RED LINES
TOWNSHIP No. VII RANGE No. V CONTINUED
QUARTER SECTION POST

QUARTER POSTS	BEARING TREES	INCHES DIAM.	COURSE THEY BEAR	LINKS DISTANT	QUARTER POSTS	BEARING TREES	INCHES DIAM.	COURSE THEY BEAR	LINKS DISTANT	QUARTER POSTS	BEARING TREES	INCHES DIAM.	COURSE THEY BEAR	LINKS DISTANT
BETWEEN SECTIONS 5 . 6	W. OAK	26	S 10½ E	13	BETWEEN SECTIONS 17 . 18	GUM	10	N 37½ E	41	BETWEEN SECTIONS 29 . 30	W. OAK	12	S 13 W	05½
	B. OAK	20	N 39½ W	22½		W. OAK	11	S 20½ W	29½		HICKORY	10	N 30 W	08½
6 . 12	W OAK	11	S 25½ E	23	18 . 24	DO	15	S 77½ W	31	30 . 36	W. OAK	24	N 77 W	14
	DO	11	S 34½ W	38		DO	18	S 23 W	41		HICKORY	12	S 70 E	06½
5 . 11	DO	12	N 50 W	55	17 . 23	DO	18	N 41 E	03	29 . 35	B. OAK	17	N 40 W	09½
	DO	18	S 83½ W	45½		DO	12	S 48 W	18		DO	17	S 85½ E	11½
11 . 12	DO	36	S 49 E	30	23 . 24	DO	18	N 49 E	36	35 . 36	W. OAK	20	S 35 E	10
	DO	11	N 33 W	24		DO	20	S 2½ E	15½		DO	22	N 2½ W	31½
3 . 4	SUGARTREE	12	N 72 W	21½	15 . 16	DO	16	S 68½ W	24½	27 . 28	DO	12	S 79 W	08
	DO	24	N 84½ E	19		DO	18	N 61 E	29½		SUGARTREE	07	N 63 E	20½
4 . 10	HICKORY	08	S 85 E	04	16 . 22	DO	18	S 65½ W	21	28 . 34	B. OAK	20	S 62½ E	33
	DO	10	S 66 W	25		DO	13	S 23 E	39½		DO	20	S 85 W	41
3 . 9	W. OAK	14	S 17 E	18½	15 . 21	HICKORY	05	N 33 E	09	27 . 33	HICKORY	09	N 37 E	15
	B. OAK	26	N 63 E	25½		DO	12	N 61½ W	37		DO	05	S 85 E	24
9 . 10	W. OAK	10	S 56 W	01	21 . 22	B. OAK	20	N 48½ W	31	33 . 34	W. OAK	07	N 55 E	15½
	DO	12	N 14 W	19		W. OAK	24	S 54 E	44½		HICKORY	06	S 72 W	10½
1 . 2	DO	20	N 18 E	32	13 . 14	DO	22	S 82½ E	15	25 . 26	W. OAK	16	S 35½ E	26
	DO	16	S 72 W	31		DO	08	S 75½ W	48		DO	16	N 8½ W	33
2 . 8	DO	12	S 84½ W	21	14 . 20	HICKORY	14	S 10½ W	16	26 . 32	W OAK	20	S 33 W	10½
	DO	14	S 9 E	34½		DO	14	S 82 E	16½		HICKORY	09	N 26 W	44
1 . 7	HICKORY	05	N 10 W	19½	13 . 19	DO	10	N 36½ E	19	25 . 31	W. OAK	12	N 71½ W	17
	DO	05	S 51 W	17		W. OAK	16	N 72 W	26		DO	08	N 23 W	14
7 . 8	W. OAK	10	S 34 E	19½	19 . 20	DO	15	S 42 W	26	31 . 32	DO	22	N 53½ E	33
	DO	16	N 7 W	50		DO	12	N 2 W	47		DO	20	S 58 W	35

DESCRIPTION OF TOWNSHIP No. VII RANGE No. V. INTERIOR SECTION CORNERS BLACK-LINES

SECTION CORNERS	BEARING TREES	INCHES DIAM.	COURSE THEY BEAR	LINKS DISTANT	SECTION CORNERS	BEARING TREES	INCHES DIAM.	COURSE THEY BEAR	LINKS DISTANT		
7 13	8 14	HICKORY	14	N 20 E	28	20 26	21 27	W. OAK	13	S 15 W	26
8 14	9 15	W. OAK	18	S 33 W	13 1/2	14 20	15 21	CHESTNUT	28	N 11 E	41 1/2
		DO	11	N 82 E	20			MAPLE	05	CORNER TREE	
2 8	3 9	DO	14	N 69 W	26			HICKORY	13	S 53 1/2 W	22
		DO	32	S 54 W	22 1/2			DOGWOOD	04	N 19 E	11 1/2
9 15	10 16	DO	28	N 73 E	56	21 27	22 28	W. OAK	28	S 56 W	06
		DO	18	N 12 W	39 1/2			HICKORY	13	N 11 W	16
		DO	14	S 7 E	52	22 28	23 29	W. OAK	13	S 77 E	22
10 16	11 17	B. OAK	22	N 10 E	22 1/2			DO	08	N 85 W	15
		W. OAK	09	S 61 E	18 1/2	16 22	17 23	DO	13	S 78 E	20
4 10	5 11	POPLAR	09	N 73 1/2 W	20			DO	16	N 23 E	24
		W. OAK	09	S 57 E	39 1/2	23 29	24 30	DO	16	IN PLACE OF POST	
11 17	12 18	DO	18	N 55 E	33			NO BEARING TREE TAKEN			
		DO	12	S 38 W	24	26 32	27 33	W. OAK	26	S 29 E	26
19 25	20 26	DO	13	N 7 E	29			DO	15	N 14 W	51 1/2
		DO	12	S 75 W	14	28 34	29 35	DOGWOOD	05	N 14 E	10
								POPLAR	04	S 34 1/2 E	20

INTERIOR SECTION CORNERS RED-LINES.

SECTION CORNERS	BEARING TREES	INCHES DIAM.	COURSE THEY BEAR	LINKS DISTANT	SECTION CORNERS	BEARING TREES	INCHES DIAM.	COURSE THEY BEAR	LINKS DISTANT		
5 11	6 12	DOUBLETREE	12	S 65 E	14	13 19	14 20	GUM	10	N 77 W	06
		W. OAK	32	N 28 W	44 1/2			W. OAK	16	S 34 1/2 E	44
3 9	4 10	POPLAR	06	N 69 1/2 E	03 1/2	29 35	30 36	HICKORY	11	N 72 1/2 E	17 1/2
		DO	09	S 49 W	14			W. OAK	10	S 46 1/2 W	42 1/2
1 7	2 8	W. OAK	18	N 21 1/2 E	10 1/2	27 33	28 34	DO	12	N 81 1/2 W	34 1/2
		B. OAK	12	S 64 W	33			DO	12	S 60 E	56
17 23	18 24	DO	30	S 84 1/2 W	37	25 31	26 32	B. OAK	24	N 11 1/2 W	12
		W. OAK	12	N 52 1/2 E	28			POPLAR	12	S 28 1/2 E	69 1/3
15 21	16 22	DO	07	N 76 1/2 E	03						
		DO	14	N 86 1/2 W	31 1/2						

A TRUE COPY
BY DAVID HOCE (REQ.)

A TRUE COPY
BY JOHN A BOND
1894