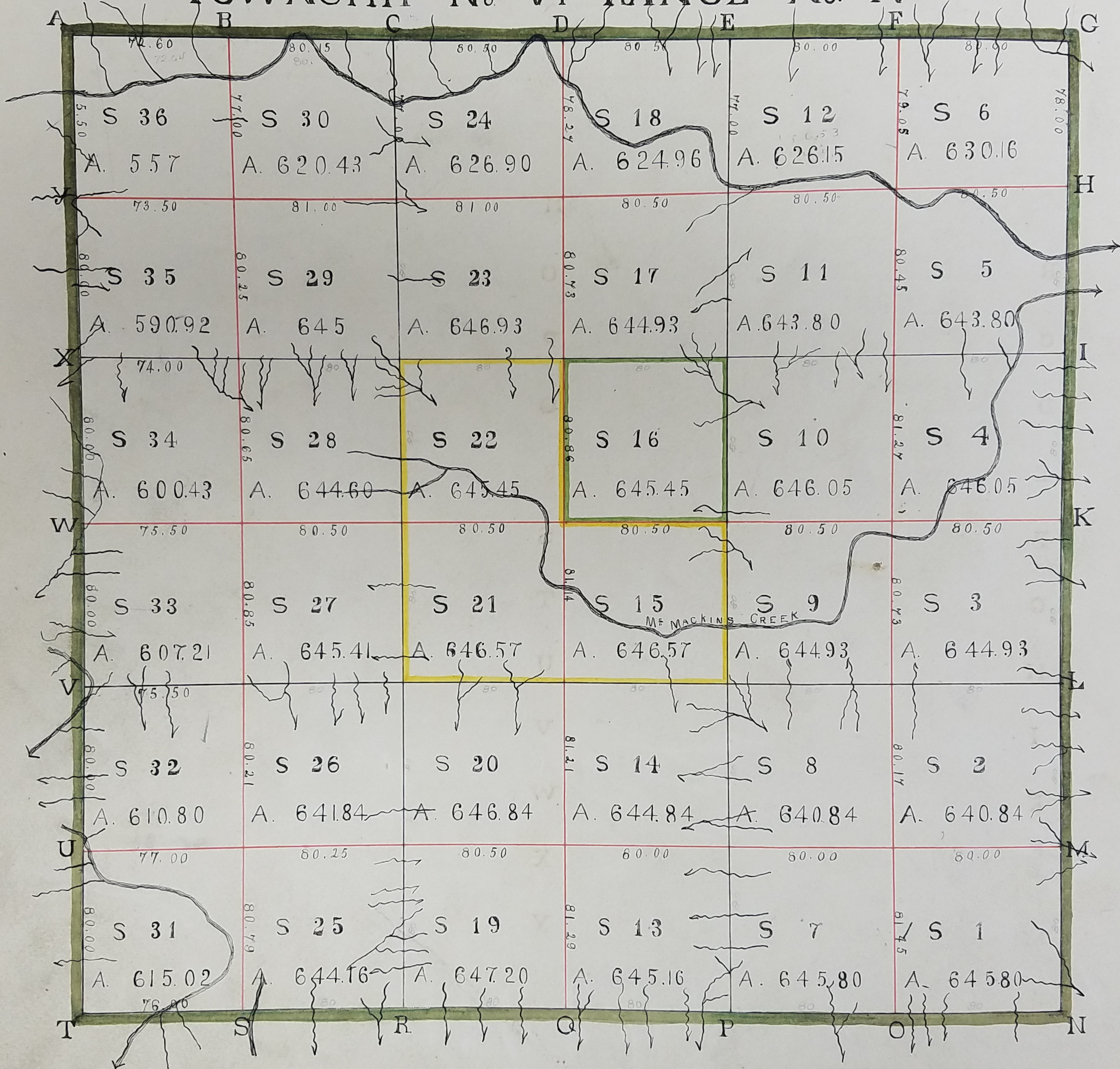
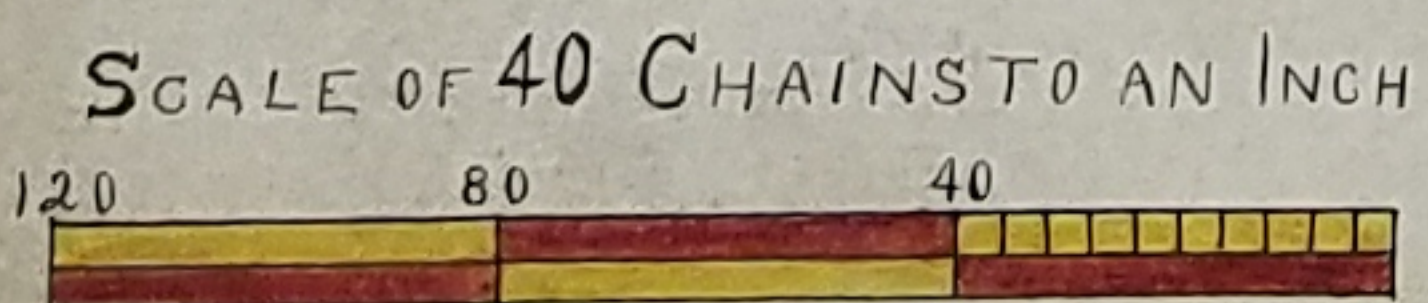


TOWNSHIP No. VI RANGE No. IV



154
8 35
16 2 35



A TRUE COPY
DAVID HOCE REG.

A TRUE COPY
BY
JOHN A BOND
1894

DESCRIPTION OF TOWNSHIP No. VI RANGE No. IV.

POSTS	BEARING	INCHES	COURSE	LINKS	POSTS	BEARING	INCHES	COURSE	LINKS
	TREES					DIAM.			
A	W. OAK	14	N 87 W	38	N	SUGARTREE	13	S 29 W	2 1/2
	DO	15	N 76 1/2 E	42		POPLAR	28	N 67 E	2 2/2
B	DO	24	N 45 E	2 1/2	O	B. OAK	11	N 53 E	0 2
	DO	24	S 27 W	18		W. OAK	19	S 75 W	19
C	DO	10	N 3 W	15	P	DO	13	S 71 E	30
	DO	13	S 15 E	3 1/2		B. OAK	18	N 57 1/2 W	2 3/2
D	DO	12	S 78 W	08 1/2	Q	SUGARTREE	11	S 85 W	29
	DO	12	S 55 E	2 2		W. OAK	34	N 67 E	45
E	DO	10	S 24 1/2 E	30	R	DO	18	IN PLACE OF POST	
	DO	09	N 65 W	15		NO BEARING TREE			
F	DO	09	S 71 E	2 1/2	S	W. OAK	19	S 82 E	27
	DOGWOOD	07	N 54 W	20 1/2		DO	15	N 56 W	52
G	W. OAK	30	S 70 W	27 1/2	T	DO	40	N 57 E	52
	DO	12	S 18 E	3 1/2		DO	20	S 22 W	25
H	SUGARTREE	08	N 34 E	04 1/2	U	DO	12	N 82 E	76 1/2
	ELM	16	S 26 E	04 1/2		SYCAMORE	07	S 22 W	73
I	W. OAK	30	N 60 W	23	V	W. WALNUT	08	N 21 E	09
	HICKORY	13	S 55 E	61		W. OAK	12	S 12 1/2 W	28
K	W. OAK	11	NORTH	21	W	DO	13	N 89 E	25 1/2
	B. OAK	17	S 24 W	30		SUGARTREE	13	S 42 W	36 1/2
L	W. OAK	13	N 26 W	27	X	BEECH	11	S 4 1/2 E	32
	POPLAR	20	S 81 1/2 E	41		W. OAK	16	N 12 W	23
M	ELM	10	N 37 W	34	Y	HICKORY	10	S 6 W	30
	W. OAK	20	S 35 E	54 1/2		DO	13	S 72 W	35

RED-LINES
TOWNSHIP No. VI RANGE No. IV CONTINUED.
QUARTER SECTION POSTS DESCRIBED

QUARTER POSTS	BEARING TREES	INCHES DIAM.	COURSE THEY BEAR	LINKS DISTANT	QUARTER POSTS	BEARING TREES	INCHES DIAM.	COURSE THEY BEAR	LINKS DISTANT	QUARTER POSTS	BEARING TREES	INCHES DIAM.	COURSE THEY BEAR	LINKS DISTANT
BETWEEN SECTIONS 5. 6	W. OAK	20	N 83 E	21½	BETWEEN SECTIONS 17. 18	W. OAK	16	N 33 W	44	BETWEEN SECTIONS 29. 30	W. OAK	42	N 8 E	16
	DO	16	N 61½ W	39½		ASH	05	S 73½ E	25½		POPLAR	07	S 38 E	18
6. 12	DO	15	N 66 W	06	18. 24	W. OAK	20	N 4 E	30½	30. 36	HICKORY	08	N 17½ E	08
	DO	18	N 67 E	51		DO	14	N 88 E	16½		W. OAK	14	N 84½ W	17
5. 11	DO	15	N 57½ E	46½	17. 23	BEECH	12	N 16 W	33	29. 35	DO	12	N 75 E	47½
	DO	13	S 73 W	43		W. OAK	18	S 60½ E	42		DO	15	S 75 W	12
11. 12	W. WALNUT	06	S 50 W	25	23. 24	HICKORY	12	S 87½ E	29½	35. 36	DO	12	S 33 W	28½
	HICKORY	12	N 69½ E	38		B. OAK	18	N 68 W	98		DO	10	N 86½ W	16½
3. 4	W. OAK	11	S 1½ W	44	15. 16	W. OAK	12	S 31 E	16½	27. 28	DO	36	N 83 E	33½
	SUGARTREE	06	N 51 E	12½		DO	12	N 34½ W	24		DO	08	S 52½ W	32½
4. 10	W. OAK	12	S 25 W	36	16. 22	DO	15	N 5 E	26½	28. 34	DO	11	S 39½ E	24
	DO	12	N 13 E	25		B. OAK	15	S 29½ E	43½		DO	14	N 2½ W	25
3. 9	DO	24	N 75½ W	46	15. 21	W. OAK	42	S 12 E	05	27. 33	DO	12	S 84 E	29
	DO	22	N ½ E	35½		HICKORY	08	N 40½ W	33		DO	14	WEST	07
9. 10	DO	09	S 29 W	02½	21. 22	GUM	07	S 35 W	17	33. 34	B. OAK	07	S 19 E	05
	B. OAK	18	N 36 W	18		HICKORY	09	N 50½ E	10		W. OAK	12	N 38 W	29
1. 2	B. OAK	22	S 53 E	10½	13. 14	DO	10	S 34½ E	19½	25. 26	DO	12	S 49½ E	07
	HICKORY	10	N 27 W	10½		DO	12	N 57 W	28		DO	11	N 74 W	23
2. 8	W. OAK	15	N 84½ W	25	14. 20	B. OAK	20	S 45½ E	08	26. 32	DO	48	N 48 W	01
	HICKORY	08	N 34½ E	24		DO	20	N 17 E	10		B. OAK	14	N 41½ E	34½
1. 7	W. OAK	15	S 7 E	21½	13. 19	HICKORY	10	N 25 E	31	25. 31	W. OAK	16	N 58 E	26
	DO	10	N 60 W	27		DOGWOOD	06	S 73 W	19½		HICKORY	10	S 42 E	23
7. 8	B. OAK	07	S 81½ E	30	19. 20	HICKORY	09	S 51 E	19	31. 32	W. OAK	07	S 5 W	1.10½
	BEECH	14	N 73 W	30		BEECH	07	N 32 W	27		DO	09	N 59 W	08½

TOWNSHIP No. VI RANGE No. IV CONTINUED

INTERIOR SECTION CORNERS BLACK-LINES

SECTION CORNERS	BEARING TREES	INCHES DIAM.	COURSE THEY BEAR	LINKS DISTANT	SECTION CORNERS	BEARING TREES	INCHES DIAM.	COURSE THEY BEAR	LINKS DISTANT
7 8 13 14	W. OAK	08	N 10 W	10 1/2	20 21 28 27	B. OAK	13	SOUTH	16
8 9 14 15	B. OAK	18	S 32 1/2 E	09	14 15 20 21	W. OAK	11	N 9 W	17 1/2
	DO	16	N 45 W	19 1/2		DO	10	S 64 E	19
2 3 8 9	GUM HICKORY	10 07	S 82 1/2 E S 76 1/2 E	28 15	21 22 27 28	DO	12	N 58 W	23
	DO	12	N 76 1/2 W	59		DO	30	S 83 1/2 E	19 1/2
9 10 15 16	W. OAK	15	S 20 E	21	22 23 28 29	DO	10	N 86 1/2 W	04
	DO	15	S 77 1/2 W	12		BEECH	12	N 57 E	22 1/2
10 11 16 17	B. OAK	12	S 19 W	19	16 17 22 23	LINN	10	S 65 W	15 1/2
	W. OAK	14	N 30 E	35 1/2		BEECH	06	N 60 W	38
4 5 10 11	DO	15	WEST	11	23 24 29 30	B. OAK	05	S 42 E	03 1/2
	DO	10	N 80 E	33		W. OAK	11	SOUTH	39
11 12 17 18	SUGARTREE	17	N 37 E	28	26 27 32 33	DOGWOOD	06	N 3 E	32
	DO	13	S 17 W	40		CHESTNUT	17	N 84 W	32
19 20 25 26	W. OAK	12	N 58 E	13		POPLAR	05	CORNER TREE	
	DO	13	N 63 1/2 W	17	28 29 34 35	DOGWOOD	07	S 82 E	42
						W. OAK	13	S 56 W	22
						DO	17	NORTH	

INTERIOR SECTION CORNERS - RED LINES

SECTION CORNERS	BEARING TREES	INCHES DIAM.	COURSE THEY BEAR	LINKS DISTANT	SECTION CORNERS	BEARING TREES	INCHES DIAM.	COURSE THEY BEAR	LINKS DISTANT
5 6 11 12	SYCAMORE	20	N 47 1/2 E	247	13 14 19 20	BEECH	12	N 26 1/2 E	05 1/2
	B. OAK	18	S 81 1/2 E	229		W. OAK	12	S 27 1/2 E	15 1/2
3 4 9 10	W. OAK	09	S 61 E	01	29 30 35 36	DO	24	S 76 W	22
	DO	18	S 41 1/2 W	18 1/2		DO	18	S 28 E	32
7 8	MAPLE	10	S 60 E	29	27 28 33 34	B. OAK	24	S 75 E	21
	BEECH	10	N 10 1/2 E	38		HICKORY	16	N 69 1/2 W	03
17 18 23 24	HICKORY	12	N 58 1/2 E	24 1/2	25 26 31 32	W OAK	26	N 19 1/2 E	39
	DO	16	N 41 W	22 1/2		DO	11	S 38 W	39
15 16 21 22	W OAK	12	S 25 1/2 E	21 1/2					
	DO	11	S 86 W	29					

A TRUE COPY
DAVID HOCE REG.

A TRUE COPY
BY
JOHN A BOND
© 1894.