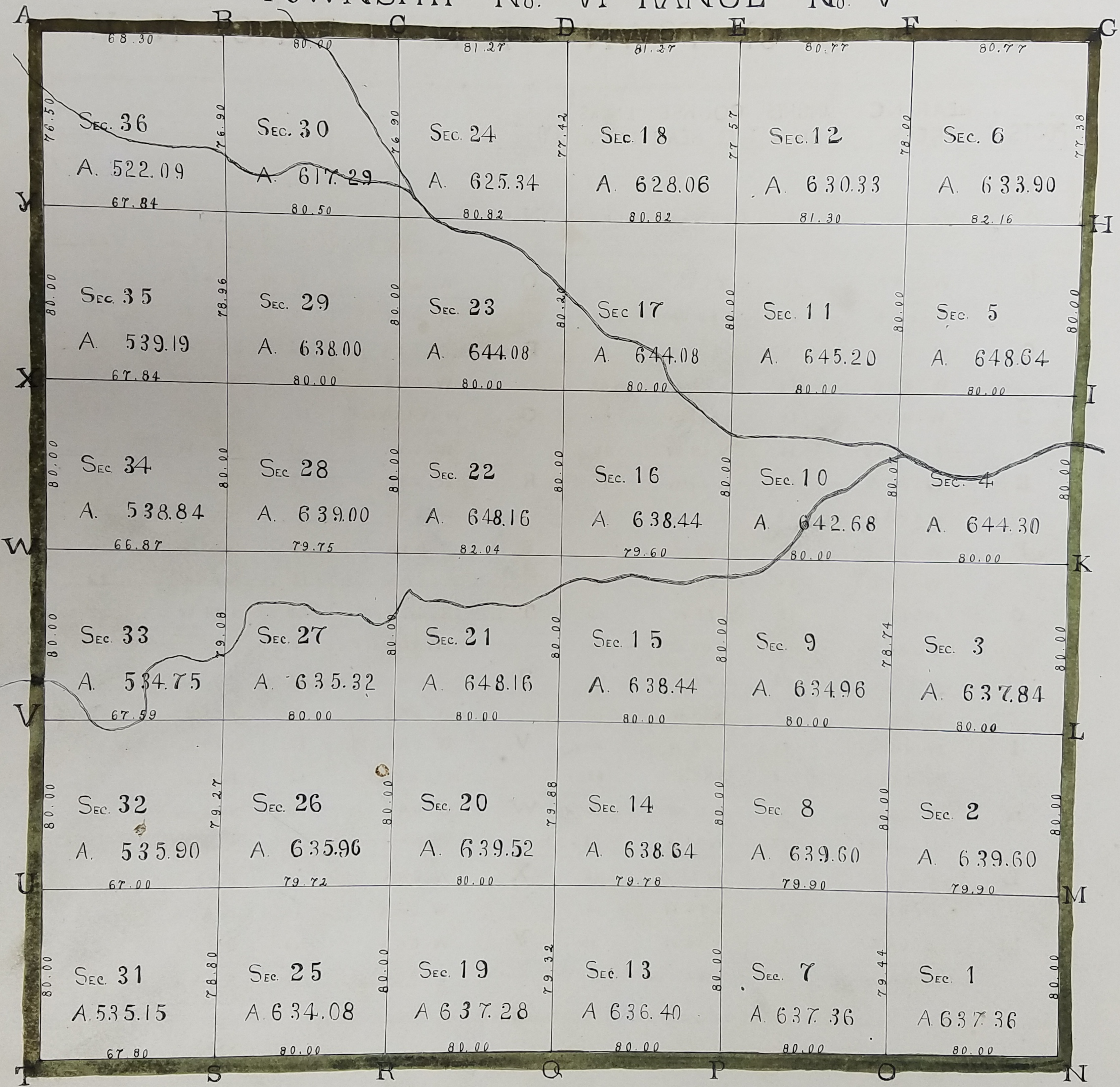


TOWNSHIP No. VI RANGE No. V



DESCRIPTION OF TOWNSHIP No. VI RANGE No. V.

POSTS	BEARING TREES	INCHES DIAM.	COURSE THEY BEAR	LINKS DISTANT	POSTS	BEARING TREES	INCHES DIAM.	COURSE THEY BEAR	LINKS DISTANT
A	W. OAK	16	CORNER	TREE	N	B. OAK	24	N 82 E	11
B	W. OAK	20	S 75 E	53	O	W. OAK	10	N 62 W	63
C	W. OAK	18	S 53 1/2 E	31	P	W. OAK	12	S 82 1/2 E	07
D	W. OAK	10	S 65 1/2 W	62	Q	W. WALNUT	10	N 65 E	13
E	W. OAK	18	N 34 W	45	R	W. OAK	15	S 43 E	12
F	W. OAK	15	S 44 W	09	S	B. OAK	18	N 82 W	28
G	W. OAK	15	N 75 W	25	T	B. OAK	28	S 71 W	33
H	MAPLE	12	S 77 E	09	U	ELM	12	S 9 1/2 E	30
I	W. OAK	24	S 23 W	34	V	W. OAK	12	S 29 E	30
J	W. OAK	36	S 68 1/2 E	65	W	HICKORY	12	N 33 E	19
K	W. OAK	30	N 11 W	30	X	W. OAK	30	S 62 W	04
L	HICKORY	12	N 88 E	33	Y	W. OAK	14	N 11 1/2 E	29
M	B. OAK	24	N 33 W	15		W. OAK	12	S 53 E	37
	B. OAK	20	S 84 W	13		W. OAK	18	N 8 W	32
	B. OAK	15	N 32 W	30		W. OAK	14	S 43 E	05
	B. OAK	12	S 22 1/2 W	32		W. OAK	10	S 84 W	25

TOWNSHIP No. VI RANGE No. V CONTINUED
 QUARTER SECTION POSTS DESCRIBED.

QUARTER POSTS	BEARING TREES	INCHES DIAM.	COURSE THEY BEAR	LINKS DISTANT	QUARTER POSTS	BEARING TREES	INCHES DIAM.	COURSE THEY BEAR	LINKS DISTANT	QUARTER POSTS	BEARING TREES	INCHES DIAM.	COURSE THEY BEAR	LINKS DISTANT
1 & 2	W. OAK	14	N 31 W	16	13. 14	W. OAK	30	N 51 E	26	25. 26	W. OAK	12	N 33 W	10
	DO	18	S 25 E	25		GUM	08	N 89 W	25		DO	18	S 6 W	10
1. 7	W. OAK	08	CORNER TREE		13. 19	B. OAK	14	N 25 E	49	25. 31	B. OAK	20	S 45 E	26
	-----	-----	-----	-----		GUM	08	S 2 E	35		W. OAK	14	N 69 W	37
2. 8	W. OAK	30	CORNER TREE		14. 20	B. WALNUT	06	S 31 W	10	26. 32	W. OAK	16	S 6 W	20
	-----	-----	-----	-----		HICKORY	24	N 37 E	22		POPLAR	08	S 88 E	15
7. 8	W. OAK	14	N 12 E	07	19. 20	W. OAK	24	S 58 W	28	31. 32	B. OAK	10	N 84 W	16
	GUM	12	S 25 E	20		W. WALNUT	08	S 66 E	08		W. OAK	12	S 83 W	25
3. 4	GUM	08	S 85 W	20	15. 16	CHERRY	12	S 84 E	24	27. 28	W. OAK	16	S 86 W	22
	B. OAK	26	N 18 E	13		BUCKEYE	18	S 34 W	33		DO	16	N 13 W	26
3. 9	MULBERRY	06	S 4 W	11	15. 21	BEECH	06	N 67 W	04	27. 33	W. OAK	30	S 57 E	29
	W. OAK	20	N 30 E	21		DO	06	N 67 E	06		ELM	06	N 39 W	12
4. 10	W. OAK	14	S 2 E	29	16. 22	W. OAK	20	N 48 W	17	28. 34	GUM	08	S 89 W	19
	DO	12	N 3 E	24		DO	26	N 32 E	16		W. OAK	10	S 85 E	27
9. 10	W. OAK	40	S 15 W	18	21. 22	W. OAK	30	S 72 W	18	33. 34	SUGARTREE	10	S 86 E	10
	DO	18	N 29 E	25		DO	16	N 51 E	33		HICKORY	08	N 54 E	11
5. 6	W. OAK	18	N 50 W	24	17. 18	B. OAK	36	S 61 E	20	29. 30	W. OAK	30	N 71 W	17
	DO	20	S 62 W	18		HICKORY	10	N 59 W	40		DO	20	N 86 E	25
5. 11	W. OAK	10	S 50 W	25	17. 23	W. OAK	24	S 12 W	12	29. 35	HICKORY	08	N 86 E	06
	DO	08	N 18 W	21		DO	14	N 15 E	40		POPLAR	10	N 4 W	30
6. 12	GUM	08	S 83 W	17	18. 24	THORN	10	N 40 W	15	30. 36	HICKORY	12	S 19 E	08
	W. OAK	20	S 26 E	25		SYCAMORE	10	S 10 W	68		B. OAK	14	N 15 E	34
11. 12	HICKORY	08	N 41 W	21	23. 24	MAPLE	08	S 24 W	21	35. 36	W. OAK	10	N 69 E	25
	W. OAK	18	S 42 E	35		B. OAK	10	N 7 W	22		DO	16	N 77 W	48

TOWNSHIP No. VI RANGE No. V CONTINUED
 INTERIOR SECTION CORNERS DESCRIBED.

SECTION CORNERS	BEARING TREES	INCHES DIAM.	COURSE THEY BEAR	LINKS DISTANT	SECTION CORNERS	BEARING TREES	INCHES DIAM.	COURSE THEY BEAR	LINKS DISTANT
1 7 . 2 8	SARVICE	06	N 4 E	04	11 17 . 12 18	W. OAK	15	S 71 1/2 W	21
	W. OAK	20	N 75 W	29		W. OAK	10	N 41 1/2 E	37
3 9 . 4 10	HICKORY	10	N 80 W	32	19 25 . 20 26	W. OAK	18	S 44 1/2 W	20
	SUGARTREE	16	S 86 E	33		W. OAK	24	N 43 E	37
5 11 . 6 12	DOGWOOD	06	S 52 W	06	20 26 . 21 27	W. OAK	18	S 88 W	48
	W. OAK	14	S 85 E	28		W. OAK	14	N 9 W	81
13 19 . 14 20	W. OAK	10	N 28 W	13	21 27 . 22 28	W. OAK	30	S 61 W	24
	W. OAK	10	S 35 W	22		W. OAK	12	N 21 E	33
15 21 . 16 22	HICKORY	10	S 24 E	31	22 28 . 23 29	W. OAK	12	S 9 W	14
	HICKORY	06	N 25 E	37		HICKORY	10	N 12 E	14
17 23 . 18 24	W. OAK	18	S 19 E	13	23 29 . 24 30	B. OAK	18	S 69 W	14
	W. OAK	18	N 15 W	40		W. OAK	15	N 11 E	15
25 31 . 26 32	W. OAK	10	N 51 E	11	2 8 . 3 9	W. OAK	12	N 46 1/2 W	43
	W. OAK	10	S 32 W	28		W. OAK	14	S 57 1/2 E	47
27 33 . 28 34	W. OAK	30	S 60 E	18	14 20 . 15 21	W. OAK	20	S 44 1/2 E	09
	W. OAK	30	S 51 W	22		GUM	10	N 24 E	22
29 35 . 30 36	W. OAK	30	S 39 W	16	26 32 . 27 33	B. OAK	24	N 51 E	29
	W. OAK	30	N 75 E	28		W. OAK	30	S 43 E	34
7 13 . 8 14	W. OAK	18	S 24 W	04	4 10 . 5 11	ELM	10	S 63 W	22
	W. OAK	20	N 32 E	35		B. OAK	20	N 44 E	51
8 14 . 9 15	W. OAK	15	N 26 W	23	16 22 . 17 23	MAPLE	12	S 62 W	14
	W. OAK	12	S 51 E	26		W. OAK	10	N 16 E	13
9 15 . 10 16	B. OAK	10	N 44 W	03	28 34 . 29 35	W. OAK	36	N 47 W	23
	B. OAK	18	S 61 E	54		W. OAK	15	S 80 1/2 E	30
10 16 . 11 17	W. OAK	10	S 61 W	24					
	W. OAK	15	N 61 E	32					

EXAMINED & COMPARED

TRUE COPY
 FROM THE ORIGINAL
 JOSEPH WOOD REC'D

A TRUE COPY
 BY
 JOHN ABOND
 1894