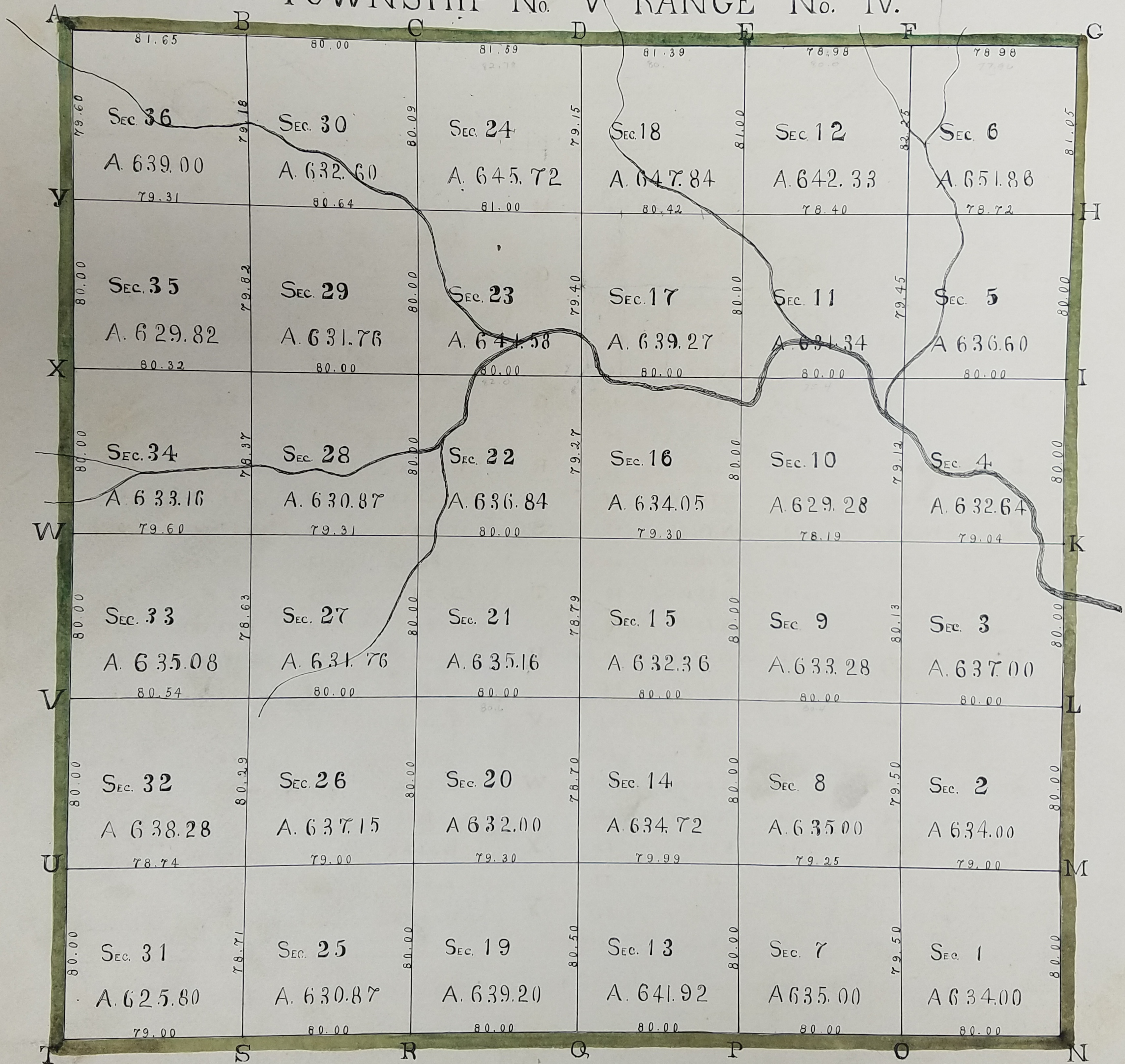


TOWNSHIP No. V RANGE No. IV.



DESCRIPTION OF TOWNSHIP No. V RANGE No. IV.

POSTS	BEARING TREES	INCHES DIAM.	COURSE THEY BEAR	LINKS DISTANT	POSTS	BEARING TREES	INCHES DIAM.	COURSE THEY BEAR	LINKS DISTANT
A	W. OAK	20	S 21 W	25	N	HICKORY	12	N 84 E	12
	DO	36	N 56 1/2 E	52		MAPLE	15	S 14 E	30
B	W. OAK	20	S 34 E	07	O	SUGARTREE	15	N 55 W	06
	DO	36	N 75 W	32		W. OAK	18	S 3 W	25
C	HICKORY	12	S 60 W	03	P	HICKORY	14	N 47 1/2 E	25
	W. OAK	24	S 32 E	10		DO	10	S 2 1/2 E	20
D	W. OAK	20	S 55 1/2 W	21	Q	W. OAK	24	N 22 E	19
	DO	20	S 35 E	26		SUGARTREE	12	S 1 1/2 W	16
E	B. OAK	18	S 16 E	39	R	W. OAK	18	N 64 1/2 W	26
	DO	20	N 75 1/2 W	07		HICKORY	20	S 34 E	16
F	W. OAK	15	N 74 E	15	S	W. OAK	18	N 52 W	09
	DO	12	N 46 1/2 W	08		DO	12	S 19 1/2 E	10
G	W. OAK	15	S 50 W	19	T	B. OAK	15	N 2 E	58
	DO	12	N 76 E	19		W. OAK	15	N 66 W	09
H	B. OAK	20	N 22 W	13	U	W. OAK	15	S 46 W	32
	W. ASH	09	S 15 E	07		DO	09	N 42 E	07
I	LINN	10	N 2 W	31	V	W. OAK	10	N 63 W	09
	DO	15	S 12 W	31		DO	19	S 70 E	26
K	HICKORY	10	S 60 W	32	W	W. OAK	20	S 22 E	26
	W. OAK	12	N 30 W	45		DO	12	N 15 E	10
L	SUGARTREE	12	S 55 W	42	X	W. OAK	20	S 45 W	04
	BEECH	15	S 56 1/2 E	22		B. OAK	12	N 21 1/2 E	28
M	B. WALNUT	18	N 11 1/2 W	84	Y	W. OAK	20	N 86 W	03
	DO	15	S 81 3/4 E	49		DO	12	S 63 1/2 E	37

TOWNSHIP No. V RANGE No. IV CONTINUED
QUARTER SECTION POSTS DESCRIBED.

QUARTER POSTS	BEARING TREES	INCHES DIAM.	COURSE THEY BEAR	LINKS DISTANT	QUARTER POSTS	BEARING TREES	INCHES DIAM.	COURSE THEY BEAR	LINKS DISTANT	QUARTER POSTS	BEARING TREES	INCHES DIAM.	COURSE THEY BEAR	LINKS DISTANT
1 & 2	W. OAK	14	S 46 W	33	13. 14	W. OAK	10	S 23 W	04	25. 26	W. OAK	30	CORNER TREE	
	POPLAR	20	N 15 E	07		DO	12	N 23 E	15					
1. 7	W. OAK	10	N 5 E	38	13. 19	W. OAK	14	CORNER TREE		25. 31	SUGARTREE	14	N 33 E	33
	SUGARTREE	15	S 24 E	24							DO	14	S 6 W	20
2. 8	BEECH	08	N 5 E	19	14. 20	W. OAK	12	N 18 W	31	26. 32	IRONWOOD	08	CORNER TREE	
	W. OAK	12	SOUTH	27		HICKORY	10	S 52 E	22					
7. 8	SUGARTREE	12	N 79 E	18	19. 20	HICKORY	08	S 27 E	19	31. 32	W. OAK	20	S 21 E	14
	DO	14	S 52 W	38		W. OAK	14	N 89 E	38		DO	10	N 8 E	21
3. 4	DOGWOOD	08	CORNER TREE		15. 16	SUGARTREE	12	N 67 W	12	27. 28	HICKORY	08	S 22 E	09
						DO	10	S 3 E	22		DO	08	N 30 W	10
3. 9	HICKORY	10	CORNER TREE		15. 21	W. OAK	18	S 85 E	16	27. 33	DOGWOOD	08	N 30 E	12
						POPLAR	24	N 86 W	36		W. OAK	30	S 39 E	23
4. 10	HICKORY	10	CORNER TREE		16. 22	W. OAK	18	S 75 E	14	28. 34	W. OAK	14	N 55 E	30
						SUGARTREE	10	N 78 W	31		DO	14	N 80 W	22
9. 10	POPLAR	20	S 46 E	07	21. 22	BOXELDER	08	N 16 E	10	33. 34	W. OAK	20	S 52 E	09
	GUM	10	N 72 W	46		ELM	10	S 75 W	16		DO	12	N 70 E	28
5. 6	W. OAK	30	S 8 E	35	17. 18	BEECH	14	S 24 W	09	29. 30	SUGARTREE	14	CORNER TREE	
	BEECH	30	N 58 W	39		IRONWOOD	08	N 30 E	13					
5. 11	W. OAK	14	N 67 E	18	17. 23	W. OAK	30	CORNER TREE		29. 35	HICKORY	10	N 16 E	09
	B. OAK	30	S 35 E	25							W. OAK	08	S 24 E	17
6. 12	W. OAK	12	SOUTH	23	18. 24	W. OAK	18	N 46 W	19	30. 36	HICKORY	08	N 85 E	03
	DO	12	N 32 W	33		DO	12	N 72 E	28		BEECH	10	N 63 W	11
11. 12	W. OAK	12	CORNER TREE		23. 24	IRONWOOD	08	S 3 E	32	35. 36	GUM	10	N 37 E	07
						W. ASH	06	N 26 E	31		B. OAK	20	S 73 W	27

TOWNSHIP No. V RANGE No. IV CONTINUED
 INTERIOR SECTION CORNERS DESCRIBED.

SECTION CORNERS	BEARING TREES	INCHES DIAM.	COURSE THEY BEAR	LINKS DISTANT	SECTION CORNERS	BEARING TREES	INCHES DIAM.	COURSE THEY BEAR	LINKS DISTANT
7 8 13 14	MAPLE	15	N 29 W	08	4 5 10 11	W. OAK	15	S 79 W	21
	DO	10	S 65 1/2 E	20		DO	14	N 74 E	12
8 9 14 15	W. OAK	12	S 29 E	16	16 17 22 23	W. OAK	20	N 72 E	08
	HICKORY	10	N 3 W	30		B. OAK	30	S 35 W	36
9 10 15 16	W. OAK	18	S 38 1/2 E	54	28 29 34 35	W. OAK	24	N 70 E	32
	W. OAK	18	N 53 1/2 W	58		DO	24	S 73 W	35
10 11 16 17	HICKORY	10	S 10 1/2 W	17	1 2 7 8	SUGARTREE	10	N 89 W	31
	POPLAR	12	N 50 E	36		BEECH	10	N 52 E	32
11 12 17 18	BEECH	10	N 78 E	16	3 4 9 10	HICKORY	08	N 88 E	09
	B. OAK	08	S 18 W	06		B. OAK	12	N 29 W	14
19 20 25 26	W. OAK	18	N 39 1/2 E	12	5 6 11 12	W. WALNUT	08	N 44 E	08
	DO	12	N 67 1/2 W	20		SUGARTREE	10	S 89 W	38
20 21 26 27	W. OAK	15	S 37 1/2 E	25	13 14 19 20	W. OAK	20	S 86 W	21
	DO	24	N 6 W	56		DO	20	N 20 W	18
21 22 27 28	W. OAK	24	N 58 E	34	15 16 21 22	B. OAK	10	N 60 W	37
	DO	12	N 88 W	11		DO	14	S 15 W	45
22 23 28 29	W. OAK	15	N 14 E	13	17 18 23 24	W. OAK	15	N 69 E	15
	DO	20	S 39 E	32		DO	18	S 8 E	27
23 24 29 30	W. OAK	20	N 69 E	16	25 26 31 32	W. OAK	14	N 52 E	06
	DO	18	S 76 1/2 W	18		DO	18	S 39 E	15
2 3 6 9	BEECH	12	S 72 W	36	27 28 33 34	W. OAK	14	N 27 E	10
	DO	12	N 41 E	37		DO	18	S 1 W	26
14 15 20 21	W. OAK	30	NORTH	13	29 30 35 36	W. OAK	18	S 4 E	28
	SUGARTREE	15	N 32 1/2 E	27		BEECH	10	N 18 E	55
26 27 32 33	W. OAK	15	N 77 E	07					
	DO	15	S 26 1/2 E	18					

(EXAMINED AND COMPARED)

TRUE COPY
 FROM THE ORIGINAL
 JOSEPH WOOD REG.

A TRUE COPY
 BY
 JOHN A. BOND
 © 1894