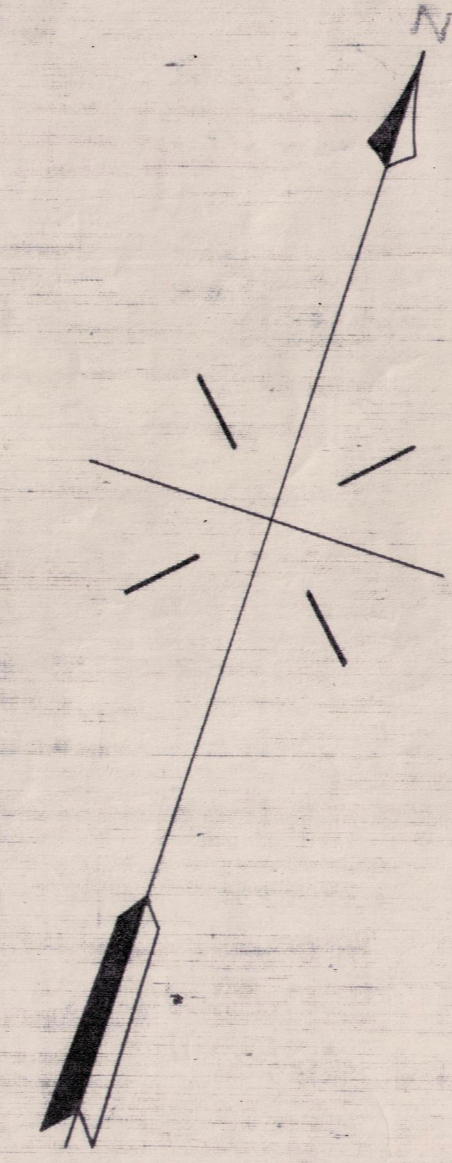


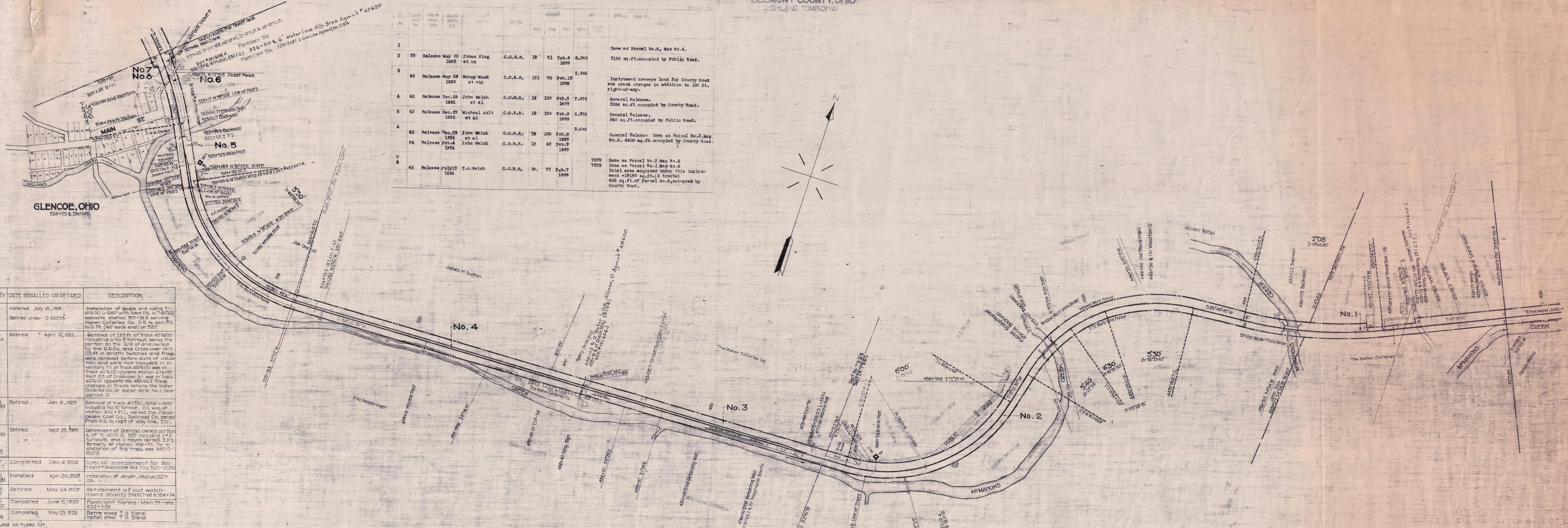
BELMONT COUNTY, OHIO
RICHLAND TOWNSHIP

No.	Date	Release	Name	Co.	Acres	Area	Description
1							Same as Parcel No. 6, Map No. 4.
2	09	Release May 20 1853	James King et ux	C.O.R.R.	18	91 Feb. 8 1899	3150 sq. ft. occupied by Public Road.
3	60	Release May 23 1853	Nancy Neuk et vir	C.O.R.R.	121	70 Feb. 13 1898	Instrument conveys land for County Road and creek changes in addition to Joe St. right-of-way.
4	42	Release Dec. 29 1851	John Welsh et al	C.O.R.R.	18	100 Feb. 9 1899	General Release. 3264 sq. ft. occupied by County Road.
5	42	Release Dec. 29 1851	Michael Ault et al	C.O.R.R.	18	100 Feb. 9 1899	General Release. 840 sq. ft. occupied by Public Road.
6	42	Release Dec. 29 1851	John Welsh et al	C.O.R.R.	18	100 Feb. 9 1899	General Release. Same as Parcel No. 3, Map No. 4.
7	65	Release July 19 1856	T.A. Welsh	C.O.R.R.	18	77 Feb. 7 1899	7875 Same as Parcel No. 2, Map No. 4. Total area acquired under this instrument = 20100 sq. ft. (2 tracts) 628 sq. ft. of Parcel No. 4, occupied by County Road.



AUTHORITY	DATE INSTALLED OR RETIRED	DESCRIPTION
C-19073 A.F.E. 472	Installed July 10, 1916. Retired under C-26235	Installation of double end siding T-4016(1) 11'00" with West P.S. in T-4076(1) opposite station 507+26.3 serving Mather Collieries Co. 2 P.S. to own P.S. to C.P. (60' each end) or 320'.
C-22304 A.F.E. 5464	Retired April 12, 1922.	Removal of 263 ft. of track 4076(5) including a No. 8 turnout, being the portion of the D.W. and owned by the B.D.Co. and Cross-over (X-1) 100 ft. in length. Switches and frogs were removed before start of valuation and were not included in inventory. P.S. of track 4076(5) was in Track 4076(2) opposite station 474+93 West P.S. of Cross-over X1 was in Track 4076(2) opposite sta 483+62.3. These changes in tracks serving the Mather Collieries Co. at Mather Mine No. 2 near Glenoe, O.
C-24976 A.F.E. 7033	Retired Jan. 8, 1925	Removal of track 4075C, total L-1001 including No. 10 turnout, P.S. was at station 432+97.1, served the Chesapeake Coal Co., Railroad Co. owned from P.S. to right of way line, 271'.
C-26235 A.F.E. 6949	Retired Sept. 23, 1925	Retirement of railroad owned portion of track 4076(1) 300' including 249 turnouts and 2 Hayes details, P.S. formerly at station 496+170. For installation of this track see 940 C-15973.
C-33677 A.F.E. 12157	Completed Dec. 6, 1926	Special assessment for Belmont in expense of sta 524+23.00.
C-30451 A.F.E. 12781	Installed Apr. 30, 1928	Installation of drain, station 527+03.
C-32793 A.F.E. 15171	Retired May 24, 1929	Retirement of cut watchman's shanty 51827+66 & 514+74
C-34835 A.F.E. 12925	Completed June 12, 1930	Flaplight Signals - Main St. - sta 524+52.5
C-34835 A.F.E. 7116	Completed May 23, 1925	Retire wood T.O. Signal install steel T.O. Signal

Continued on typed list



RIGHT-OF-WAY AND TRACK MAP
THE BALTIMORE AND OHIO RAILROAD COMPANY
OPERATED BY
THE BALTIMORE AND OHIO RAILROAD COMPANY
MAIN LINE OHIO-NEWARK DIVISION
STATION 422+40 TO STATION 528+00
SCALE: 1 IN. = 200 FT. JUNE 20, 1935
OFFICE OF VALUATION ENGINEER
BALTIMORE, MD.

V-1251
5