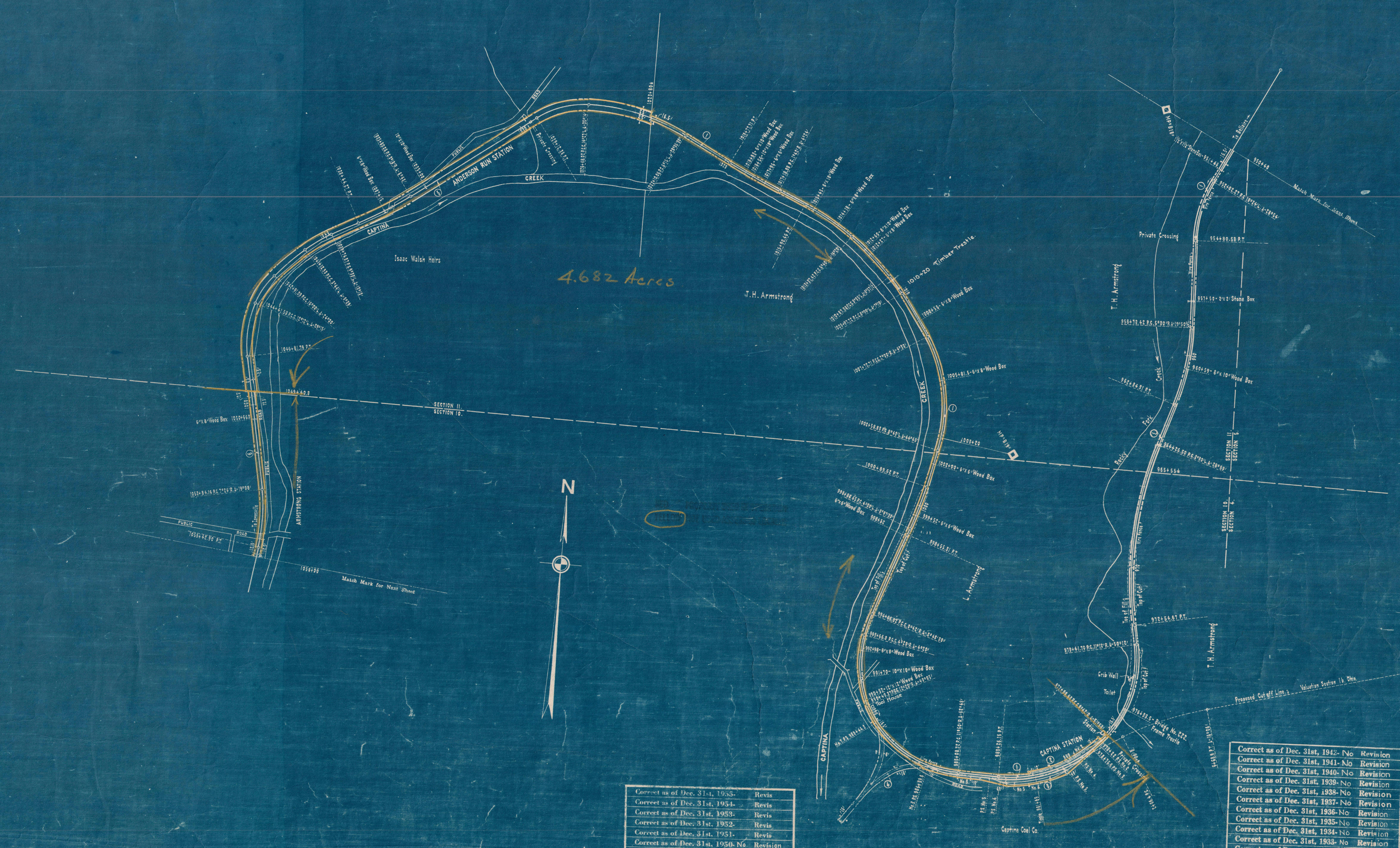


BELMONT COUNTY, OHIO  
WASHINGTON TOWNSHIP  
T. 5 N., R. 4 W.



4.682 Acres



SCHEDULE OF SIDINGS AND CROSSOVERS

| Station | Location | Class | Length | Private | Total | Remarks              |
|---------|----------|-------|--------|---------|-------|----------------------|
|         |          |       | 151    |         |       |                      |
|         |          |       | 164    |         |       |                      |
|         |          |       | 156    |         |       |                      |
|         |          |       |        |         |       | SPR. Removed 3-31-28 |
|         |          |       |        |         |       | 3-31-28              |

|  |
|--|
| Correct as of Dec. 31st, 1935. No Revision |
| Correct as of Dec. 31st, 1934. Revis.      |
| Correct as of Dec. 31st, 1933. Revis.      |
| Correct as of Dec. 31st, 1932. Revis.      |
| Correct as of Dec. 31st, 1931. Revis.      |
| Correct as of Dec. 31st, 1930. No Revision |
| Correct as of Dec. 31st, 1929. No Revision |
| Correct as of Dec. 31st, 1928. No Revision |
| Correct as of Dec. 31st, 1927. No Revision |
| Correct as of Dec. 31st, 1926. No Revision |
| Correct as of Dec. 31st, 1925. No Revision |
| Correct as of Dec. 31st, 1924. No Revision |
| Correct as of Dec. 31st, 1923. No Revision |
| Correct as of Dec. 31st, 1922. No Revision |
| Correct as of Dec. 31st, 1921. No Revision |
| Correct as of Dec. 31st, 1920. No Revision |
| Correct as of Dec. 31st, 1919. No Revision |
| Correct as of Dec. 31st, 1918. No Revision |

|  |
|--|
| Correct as of Dec. 31st, 1917. No Revision |
| Correct as of Dec. 31st, 1916. No Revision |
| Correct as of Dec. 31st, 1915. No Revision |
| Correct as of Dec. 31st, 1914. No Revision |
| Correct as of Dec. 31st, 1913. No Revision |
| Correct as of Dec. 31st, 1912. No Revision |
| Correct as of Dec. 31st, 1911. No Revision |
| Correct as of Dec. 31st, 1910. No Revision |
| Correct as of Dec. 31st, 1909. No Revision |
| Correct as of Dec. 31st, 1908. No Revision |
| Correct as of Dec. 31st, 1907. No Revision |
| Correct as of Dec. 31st, 1906. No Revision |
| Correct as of Dec. 31st, 1905. No Revision |
| Correct as of Dec. 31st, 1904. No Revision |
| Correct as of Dec. 31st, 1903. No Revision |
| Correct as of Dec. 31st, 1902. No Revision |
| Correct as of Dec. 31st, 1901. No Revision |
| Correct as of Dec. 31st, 1900. No Revision |

|  |
|--|
| Correct as of Dec. 31st, 1929. No Revision |
| Correct as of Dec. 31st, 1928. No Revision |
| Correct as of Dec. 31st, 1927. No Revision |
| Correct as of Dec. 31st, 1926. No Revision |
| Correct as of Dec. 31st, 1925. No Revision |
| Correct as of Dec. 31st, 1924. No Revision |
| Correct as of Dec. 31st, 1923. No Revision |
| Correct as of Dec. 31st, 1922. No Revision |
| Correct as of Dec. 31st, 1921. No Revision |
| Correct as of Dec. 31st, 1920. No Revision |
| Correct as of Dec. 31st, 1919. No Revision |
| Correct as of Dec. 31st, 1918. No Revision |

Sheet No. 10 of 11 of Ohio River and Western Railway  
from survey station 1101+40 to survey station 1061+40.

RIGHT OF WAY AND TRACK MAP  
OHIO RIVER AND WESTERN RAILWAY

STATION 952+40 TO STATION 1066+00  
SCALE 1 INCH = 200 FEET  
OFFICE OF VALUATION ENGINEER  
PITTSBURGH, PA.