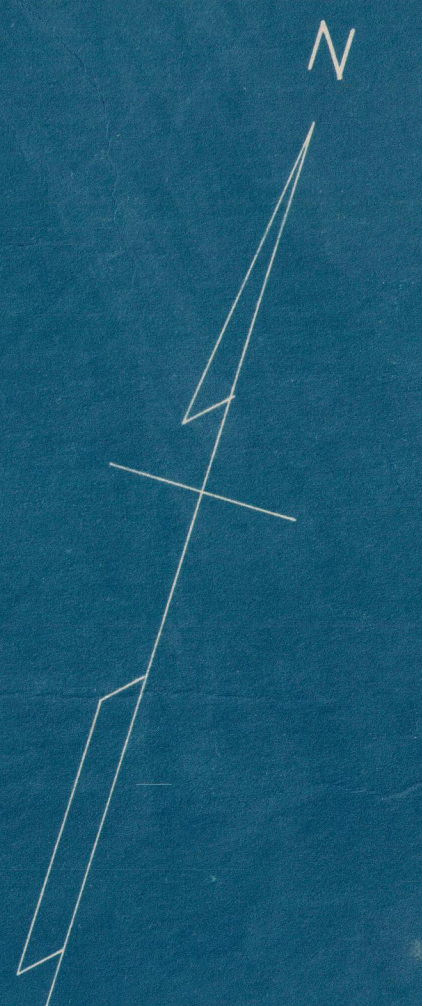


MATCH MARK FOR SHEET NO. 15.18

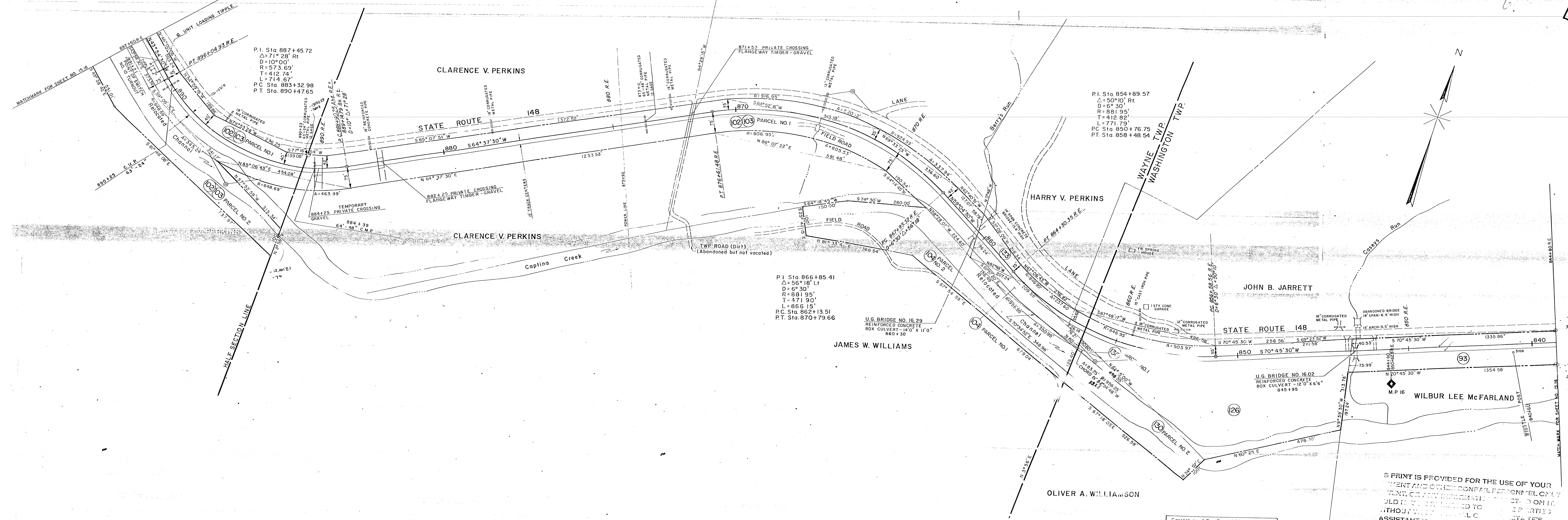


● PROPERTY USED IN OPERATION
● NOT USED ASSESSED LOCALLY

Correct as of Dec. 31st, 1955.	Revis
Correct as of Dec. 31st, 1954.	Revis
Correct as of Dec. 31st, 1953-Map	Revised
Correct as of Dec. 31st, 1952-No.	Revision
Correct as of Dec. 31st, 1951-No.	Revision
Correct as of Dec. 31st, 1950.	No Revision
Correct as of Dec. 31st, 1949-No.	Revisions
Correct as of Dec. 31st, 1948-Map	Revised
Correct as of Dec. 31st, 1947-No.	Revision
Correct as of Dec. 31st, 1946.	Revis
Correct as of Dec. 31st, 1945.	Revis
Correct as of Dec. 31st, 1944.	Revis
Correct as of Dec. 31st, 1943.	Revis

Annals Company
 RIGHT OF WAY AND TRACK MAP
PITTSBURGH, OHIO VALLEY AND CINCINNATI R.R.
 STATION 844+80 TO
 SCALE 1" = 100' JUNE 30, 1918
 OFFICE OF VALUATION ENGINEER
 PHILADELPHIA, PA.

V.24
 OHIO
 15.17
 V.12
 OHIO
 15.17



P.I. Sta. 887+45.72
 $\Delta = 71^\circ 28' \text{ Rt.}$
 $D = 10^\circ 00'$
 $R = 573.69'$
 $T = 412.74'$
 $L = 714.67'$
 P.C. Sta. 883+32.98
 P.T. Sta. 890+47.65

P.I. Sta. 854+89.57
 $\Delta = 50^\circ 10' \text{ Rt.}$
 $D = 6^\circ 30'$
 $R = 881.95'$
 $T = 412.82'$
 $L = 771.79'$
 P.C. Sta. 850+76.75
 P.T. Sta. 858+48.54

P.I. Sta. 866+85.41
 $\Delta = 56^\circ 18' \text{ Lt}$
 $D = 6^\circ 30'$
 $R = 881.95'$
 $T = 471.90'$
 $L = 866.15'$
 P.C. Sta. 862+13.51
 P.T. Sta. 870+79.66

U.G. BRIDGE NO. 16.29
 REINFORCED CONCRETE
 BOX CULVERT - 14'0" X 11'0"
 860+30

U.G. BRIDGE NO. 16.02
 REINFORCED CONCRETE
 BOX CULVERT - 12'0" X 6'6"
 845+95

BELMONT COUNTY, OHIO
 WASHINGTON TWP
 WAYNE TWP.

SCHEDULE OF PROPERTY

PARCEL NO.	GRANTOR	GRANTEE	KIND OF INSTRUMENT	DATE OF INSTRUMENT	RECORDED			CUSTODIANS RECORD			AREA	REMARKS
					BOOK	PAGE	DATE	REA. NO.	BOX	PKG.		
93	WILBUR LEE McFARLAND et ux	PENDEL COMPANY	Deed									
102-103	CLARENCE V. PERKINS et ux	PENDEL COMPANY	Deed							9.459 Ac.±		
104	JAMES W. WILLIAMS et ux	PENDEL COMPANY	Deed							9.670 Ac.±	PARCEL NO. 2 EASEMENT FOR CHANNEL RELOCATION	
126	JOHN B. JARRETT et ux	PENDEL COMPANY	Deed							3.749 Ac.±	PARCEL NO. 2 EASEMENT FOR CHANNEL RELOCATION	
130	OLIVER A. WILLIAMSON et ux	PENDEL COMPANY	Deed							6.063 Ac.±		
133	HARRY V. PERKINS et ux	PENDEL COMPANY	Deed							1.591 Ac.±		
			Deed							0.655 Ac.±	PARCEL NO. 2 EASEMENT FOR CHANNEL RELOCATION	

LEGEND
 --- = R.E. = Real Estate Center Line
 --- = Rev. R.E. = Revised Real Estate Center Line
 --- = Const. = Construction Center Line

CORRECT AS OF	REVISED	YES	NO
DEC 31 1970			
1971			
1972			
1973			
1974			
1975			
1976			
1977			
1978			
1979			
1980			
1981			
1982			
1983			
1984			
1985			
1986			
1987			
1988			
1989			
1990			
1991			
1992			
1993			
1994			
1995			

A SPRINT IS PROVIDED FOR THE USE OF YOUR
 AGENT AND OTHER CONFIDENTIAL PERSONNEL ONLY.
 PRINT OR ANY INFORMATION DERIVED FROM THIS
 PLAN SHOULD NOT BE DISSEMINATED TO ANY OTHER PARTIES
 WITHOUT THE WRITTEN CONSENT OF THE ASSISTANT
 ASSISTANT VICE PRESIDENT AND DIRECTOR
 MANAGEMENT SERVICES

PENDEL COMPANY
 RIGHT OF WAY AND TRACK MAP
 CENTRAL REGION-PITTSBURGH DIVISION
 CAPTINA BRANCH
 STATION 844+80 R.E. TO STATION 897+60 R.E.
 SCALE: 1" = 100' JUNE 30, 1918